

TABLE I - STANDARD UNIT AIRFLOW RATING

| NO. OF FILTERS WIDE | 1/2                                  | 1     | 1-1/2 | 2      | 2-1/2  | 3      | 3-1/2  | 4      | 4-1/2  | 5      | 5-1/2  | 6      | A      |      |
|---------------------|--------------------------------------|-------|-------|--------|--------|--------|--------|--------|--------|--------|--------|--------|--------|------|
| WIDTH INCHES        | 12.00                                | 24.00 | 36.00 | 48.00  | 60.00  | 72.00  | 84.00  | 96.00  | 108.00 | 120.00 | 132.00 | 144.00 |        |      |
| NO. OF FILTERS HIGH | AIRFLOW CAPACITIES (CFM), AT 500 FPM |       |       |        |        |        |        |        |        |        |        |        |        |      |
| 1/2                 | 15.25                                | -     | 1,000 | -      | 2,000  | -      | 3,000  | -      | 4,000  | -      | 5,000  | -      | 6,000  | 3.88 |
| 1                   | 27.25                                | 1,000 | 2,000 | 3,000  | 4,000  | 5,000  | 6,000  | 7,000  | 8,000  | 9,000  | 10,000 | 11,000 | 12,000 | 3.88 |
| 1-1/2               | 39.50                                | -     | 3,000 | -      | 6,000  | -      | 9,000  | -      | 12,000 | -      | 15,000 | -      | 18,000 | 4.00 |
| 2                   | 51.50                                | 2,000 | 4,000 | 6,000  | 8,000  | 10,000 | 12,000 | 14,000 | 16,000 | 18,000 | 20,000 | 22,000 | 24,000 | 4.00 |
| 2-1/2               | 63.75                                | -     | 5,000 | -      | 10,000 | -      | 15,000 | -      | 20,000 | -      | 25,000 | -      | 30,000 | 4.12 |
| 3                   | 75.75                                | 3,000 | 6,000 | 9,000  | 12,000 | 15,000 | 18,000 | 21,000 | 24,000 | 27,000 | 30,000 | 33,000 | 36,000 | 4.12 |
| 3-1/2               | 88.00                                | -     | 7,000 | -      | 14,000 | -      | 21,000 | -      | 28,000 | -      | 35,000 | -      | 42,000 | 4.25 |
| 4                   | 100.00                               | 4,000 | 8,000 | 12,000 | 16,000 | 20,000 | 24,000 | 28,000 | 32,000 | 36,000 | 40,000 | 44,000 | 48,000 | 4.25 |

TABLE II FILTER OPTIONS

| TYPE           | DEPTH |
|----------------|-------|
| HP             | 12    |
| 30/30 (4')     | 3.88  |
| RIGA-FLO (6')  | 5.88  |
| RIGA-FLO (12') | 11.50 |
| AEROPAC (6')   | 5.88  |
| AEROPAC (12')  | 11.50 |
| DURAFIL        | 11.50 |
| RIGACARB       | 11.50 |
| RIGA-RP        | 12.31 |

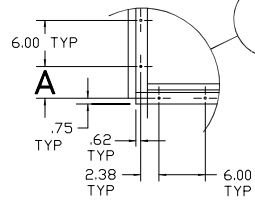
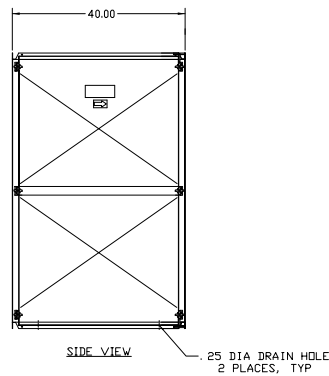
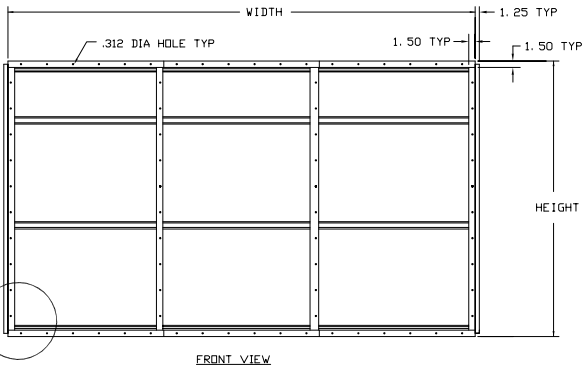
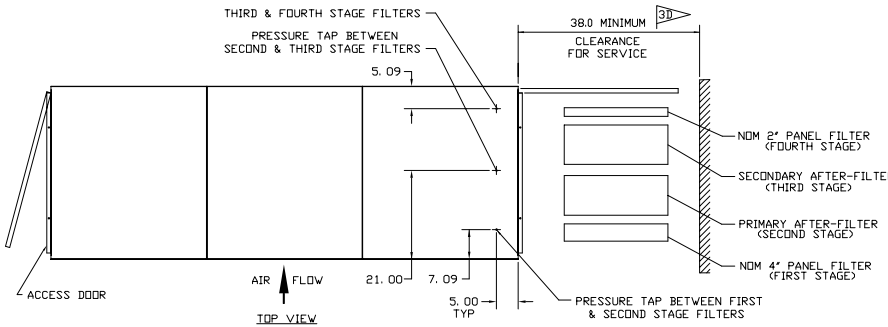
TABLE III G/P HOUSING OPTIONS

| OPTION | DESCRIPTION                    |
|--------|--------------------------------|
| 6P     | STANDARD                       |
| 6PD    | INSULATED DOORS                |
| 6PI    | FULLY INSULATED                |
| 6PH    | HIGH PRESSURE (+/- 8" W.G.)    |
| 6PHD   | HIGH PRESSURE, INSULATED DOORS |
| 6PHI   | HIGH PRESSURE, FULLY INSULATED |

| TABLE IV MANUFACTURING DRAWINGS |        |      |  |
|---------------------------------|--------|------|--|
| 6P                              | 400551 | 6PH  |  |
| 6PD                             | 403864 | 6PHD |  |
| 6PI                             | 403340 | 6PHI |  |

GENERAL NOTES:

- UNIT IS COMPLETELY FACTORY ASSEMBLED. FOR CAPACITY REFER TO TABLE I. FOR APPLICATION REFER TO SALES BULLETIN 2419-(LATEST REV)
- STANDARD MATERIAL OF CONSTRUCTION: 16GA GALVANIZED STEEL HOUSING, EXTRUDED ALUMINUM TRACKS WITH FIN-SEAL (SEE DWG. 401335), PREFILTER CHANNEL, NEOPRENE DOOR GASKET, PHENOLIC KNOB FOR POSITIVE DOOR SEALING, 18GA GALVANIZED STEEL HOLDING FRAMES AND APPROPRIATE FILTER FASTENERS. PRESSURE TAP IS INSTALLED BETWEEN PREFILTER AND FINAL FILTER. (SEE DWG. 094805).
- THE HOLDING FRAME IS INTEGRAL PART OF THE GLIDE/PACK HOUSING, NO FASTENERS REQUIRED.
- DURAFIL AND RIGA-CARB REQUIRE C-70 FASTENERS WHEN INSTALLED IN HOLDING FRAME.
- BOTH DOORS FEATURE A "LIFT & REMOVE" FUNCTION FOR EASY ACCESS IN A LIMITED SPACE
- HOUSING OPTIONS: (SPECIAL PRICING AND PART NUMBERS REQUIRED).
  - 16GA 304 OR 316 STAINLESS STEEL HOUSING AND EXTRUDED ALUMINUM TRACKS.
  - PRIMED ONLY (OR PRIMED AND PAINTED) INSIDE, OUTSIDE OR BOTH.
  - FIVE (5) FILTERS HIGH MAXIMUM AS ONE PIECE CONSTRUCTION.
  - OTHER SPECIAL OPTIONS REQUIRE CAMFIL FARR ENGINEERING CONSULTATION.
  - SEE TABLE II FOR FILTER OPTIONS. FILTERS ARE NOT INCLUDED WITH HOUSING, ORDER SEPARATELY.
- ORDERING INFORMATION: SPECIFY MODEL, SIZE AND TYPE OF FINAL FILTER FOR WHICH HARDWARE AND/OR FASTENERS SHOULD BE FURNISHED. EXAMPLE: GLIDE/PACK 6PX 2X4.5 (G/P 6P X 2X4.5)
  - OPTION FILTERS HIGH X WIDE
  - FINAL FILTER OPTIONS
  - GLIDE/PACK



PERFORMANCE NOTES:

- STANDARD HOUSING OPERATING PRESSURE TO +/- 3" W.G. WITH LESS THAN 0.5% LEAKAGE INTO HOUSING FRAME. LEAKAGE AROUND FILTER LESS THAN 1% AT 3" W.G. DIFFERENTIAL AT 2,000 CFM FOR 1X1 UNIT.
- OPERATING TEMPERATURE 250°F CONTINUOUS. MEETS NFPA 90A AND TESTED PER ASTM-E84.
- INSULATION ON INSULATED UNITS IS 1" THICK AND IS RATED AT 0.25-0.30 "K" FACTOR.
- RECOMMENDED PRESSURE GAUGE ACCURACY TO BE +/- 3% FROM 0.0-6.0 W.G.

| REV | DATE     | DESCRIPTION       | EWD      | DFT | CK  | APP   |
|-----|----------|-------------------|----------|-----|-----|-------|
| H   | 08/22/06 | REVISED PER SALES | 14955-AM | AC  | CAM | Cesar |
| A   | 06/23/98 | FIRST ISSUE       | 14576-A  | WWS | JWC | Cesar |



|                                  |                |     |
|----------------------------------|----------------|-----|
| DESCRIPTION                      |                |     |
| GLIDE/PACK 6P<br>1/2 THRU 4 HIGH |                |     |
| SHEET                            | DRAWING NUMBER | REV |
| 1 OF 1                           | 400550         | H   |