

Camfil Farr Product Description Decoder Book

November 3, 2005



Camfil Farr Absolute Products Description System

1 2 3 4 5 6 7 8 9 10 11 12 13 14 15 16 17 18 19 20 21 22 23 24 25 26 27 28 29 30
E E F V - X X T Y Y T D D - G L - P - M - M - S L - Z / Z X

EE	
Filter Efficiency	
01=99.97% @ 0.3	
07=95% @ 0.3	
12=99.99% @ 0.3	
13=99.999% @ 0.3	
14=99.995% @MPPS	

F	
Filter Series	
X = X-Body (Single turn flange const.)	
L = Wood Frame, potted	
E = Metal Frame AG-1 (Frame materials F or H Only) (Separator Materials M or V Only) (MIL-SPEC media Only)	
A = Aluminum Frame	
F = High Temp. 750 F (Ceramic Seal)	
H = Fire Retardant Particle Board, potted	
K = High Temp. 500 F (Silicone Seal, Sil Gel Gskt 400 F)	

DD	
Frame Depth	
02 = 2.00	
03 = 3.06 ¹	
06 = 5.87 for Gskt = 6.18 for Gel	
= 6.25	
= 7.50 ⁹	
= 10.50 ⁶	
= 11.50	
= 13.00	
= 17.00 ⁷	
= 18.50 ⁷	
= 20 ⁷	

P	
Nominal Pack Depth	
1 = 2-5/8	
2 = 5-3/16	
3 = 10-1/2	

M	
Frame Material	
A = 3/4" Non-Fire Retardant MDF Board ³	
B = 3/4" Fire Retardant Particle Board ⁵	
C = 16 ga. Galvaneal	
D = 14 ga. Galvaneal	
E = 16 ga. 304 SS	
F = 14 ga. 304 SS	
P = 0.080 THK Aluminum	
V = 3/4" Particle Board	

SL	
S= SCREEN TYPE L= LOCATION	
S : SCREEN TYPE	
0 = No Screen	
1 = galvanized, 4x4 mesh	
2 = Perforated S/S 1/4" Pattern	
3 = S/S 4x4 mesh	
4 = Laminator (for 5,6 & 7 Packs)	
5 = White Expanded Steel	
L : Screen Location	
0 = No Screen	
U = Upstream	
D = Downstream	
B = Both Sides	

X	
Customer identifier	
0 -Not customer specific	
C -Customer specific (see 2nd line of description)	

V	
Separator Configuration	
S = Standard Capacity	
H = High Capacity	

GL	
G = GASKET TYPE L = LOCATION	
G : GASKET TYPE	
0 = No Gasket / Gel	
1 = Seamless gasket	
2 = Silicone Sponge HT - 1/4 x 3/4	
3 = Gel Generic Urethane	
4 = Gel Generic Silicone	
5 = Ceramic	
A = Poron - 1/4 x 3/4	
B = Neoprene - 1/4 x 3/4 (AW ASTM D 1056 2C3 or 2C4)	
C = Neoprene SCE43 1/4 x 3/4	
D = Neoprene 1/4 x 3/4, coated w/silicone grease	
E = Seamless gasket coated w/silicone grease	
L : Gasket Location	
0 = No Gasket / Gel	
U = Upstream	
D = Downstream	
B = Both Sides	

XXT	
Parallel to Pleat Outside Dimension (Inches)	
YYT	
Perpendicular to Pleat Outside Dimension (Inches)	
-Where XX & YY are in inches (I.e. 12, 18, 24, 30 etc)	
T	
Fractional Equivalents for code T:	
B= 1/8"	J= 5/8"
D= 1/4"	L= 3/4"
F= 3/8"	N= 7/8"
H= 1/2"	Z= 0"

M	
Separator Material and Configuration	
M (Separator Material)	
A = 0.0012 Aluminum	
M = 0.0015 THK Aluminum (Mil-Spec)	
V = 0.0015 THK Vinyl Coated Aluminum	
P = Paper ⁴	
0 = No Separator	

Z / Z	
Filter Options	
* Both Z's represent an option potential, if only one is present use the code for the first Z and a "0" code for the second Z. (Cover/Adapter material same as frame except galv. Adapter for wood frame filters)	
0 = No Options	
A = Include extraction clips	
L = E series frame less AG-1 requirements	
N = E Series Mfg IAW AG-1 requirements (Not AG-1 certified)	

Durafil Model Number System

Description 2 (first 30 characters of description)

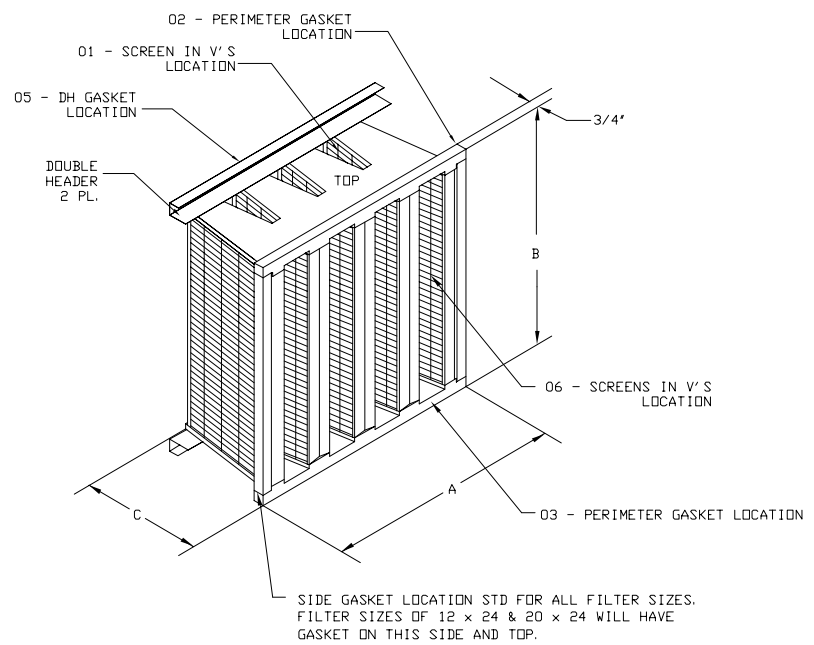
D U 1 5 1 1 - S S - E E - X X / X X , ,

DU1511 Product Type
DU1511 - DURAFIL

SS Size Designation
11 - 23-3/8(W) x 23-3/8(L) x 11-1/2in
21 - 23-3/8(W) x 19-3/8(L) x 11-1/2(D)
31 - 19-3/8(W) x 19-3/8(L) x 11-1/2(D)
51 - 23-3/8(W) x 11-3/8(L) x 11-1/2(D)

XX Options
DH - Double Header (18-13/16")
00 - No Gasket
01 - White Expanded Steel Screen in V's (see sketch on next of page for location)
02 - Perimeter Gasket (see sketch for location)
03 - Perimeter Gasket (see sketch for location)
04 - Obsolete
05 - DH Gasket (see sketch for location)
06 - White Expanded Steel Screen in V's (see sketch for location)
07 - Perimeter Gasket - SCE43 1/4x3/4 dove tail in "02" location (see sketch for location)
08 - Obsolete
09 - Pour in Place gasket in "03" Perimeter Gasket Location
10 - Perimeter Gasket - SCE43 1/4 x 5/8" dove tail in "02" location (see sketch for location)
11 - Special UL 900 Filter - See BOM
12 - Obsolete
13 - Perimeter Gasket - SCE43 1/4 x 5/8" dove tail in "03" location (see sketch for location)
14 - Side Gasket - SCE43 1/4 x 5/8" in standard side gasket location.
15 - Side Gasket -in standard side gasket location and opposite side
SP - Flat sides of media packs sealed with butyl sealant
DH12 - Double Header (9-15/16")
DH20 - Double Header (17-15/16")
DH24 - Double Header (23-3/8")
DHB - Full Box Casing added for prefilter installation.
DHF - Full Side Casing added for prefilter installation.

EE Media Type
MV11 - 65% Ashrae
MV13 - 85% Ashrae
MV14 - 95% Ashrae
98 - 98% Ashrae
MV16 - 95%DOP Media
98DOP - 98%DOP Media
MV11A - 65% Ashrae, Antifungal
MV13A - 85% Ashrae, Antifungal
MV14A - 95% Ashrae, Antifungal
HE - 99.99% HEPA media



** Note: Each option is separated by a "/" and the model number ends with a ".". A space will be left after the "." and generic descriptive information will follow.

Rev	Date	Description
Z	9/21/2005	Changed Media Type Codes to MERV format (ex: MV11 was 65)
Y	6/22/2005	Added Option "15"
X	3/23/2005	Added Option "14"
V	12/29/2004	Revised "SP" option code description.
U	7/7/2004	Added option "13" for gskt
T	6/28/2004	Changed option code "12" to obsolete.

Durafil 2V Model Number System

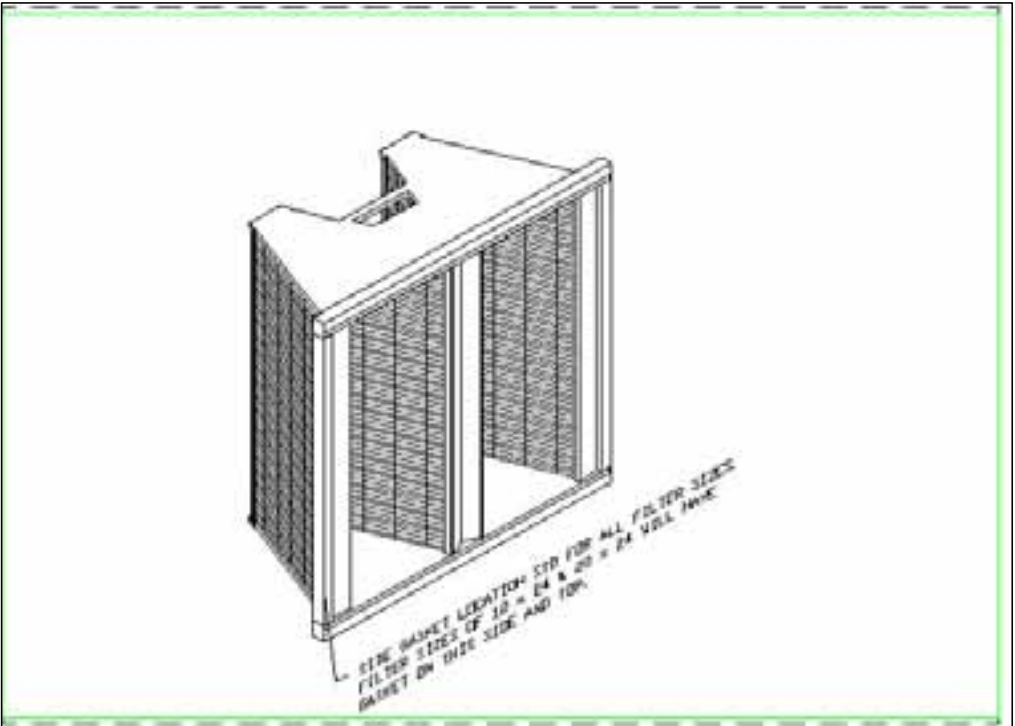
Description 2 (first 30 characters of description)



DU1511
Product Type
 DU2V-1511 - DURAFIL 2V

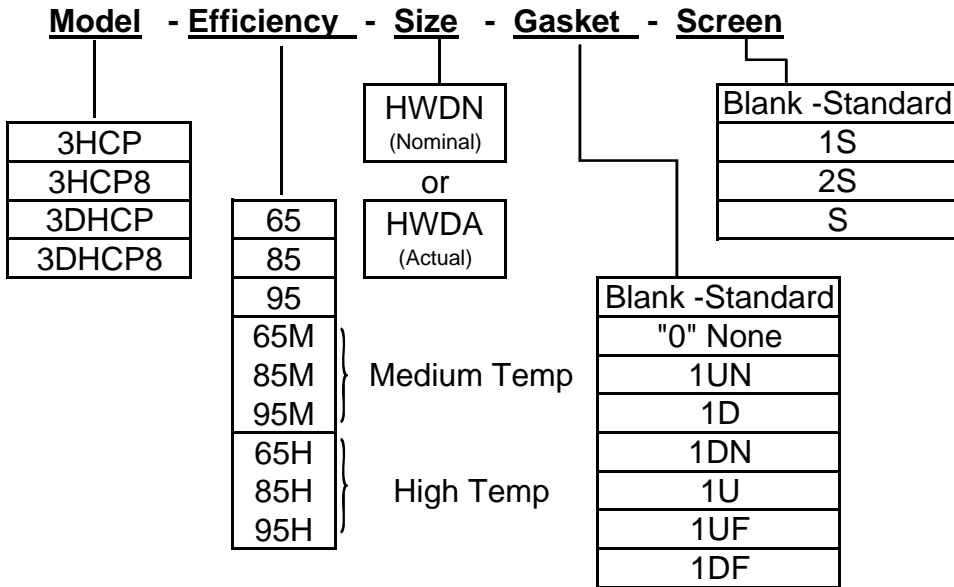
SS
Size Designation
 11 - 23-3/8(W) x 23-3/8(L) x 11-1/2in
 21 - 23-3/8(W) x 19-3/8(L) x 11-1/2(D)
 51 - 23-3/8(W) x 11-3/8(L) x 11-1/2(D)

EE
Media Type
 MV11 - MERV 11 (60-65% Ashrae)
 MV13 - MERV 13 (80-85% Ashrae)
 MV14 - MERV 14 (90-95% Ashrae)



Final Filters - AeroPac (With Header)

Mac Pac Descriptions



Abbreviations:

3HCP=	Single header 1 1/8
3HCP8=	Single header 7/8
3DHCP=	Double header 1 1/8
3DHCP8=	Double header 7/8
1UN=	One neoprene gasket upstream
1D=	One polyfoam gasket downstream
1DN=	One neoprene gasket downstream
1U=	One polyfoam gasket upstream
1UF=	One fiberglass(woven) gasket upstream
1DF=	One fiberglass(woven) gasket downstream
1S=	One screen downstream
2S=	Screen upstream & downstream
S=	Special feature refer to drawing

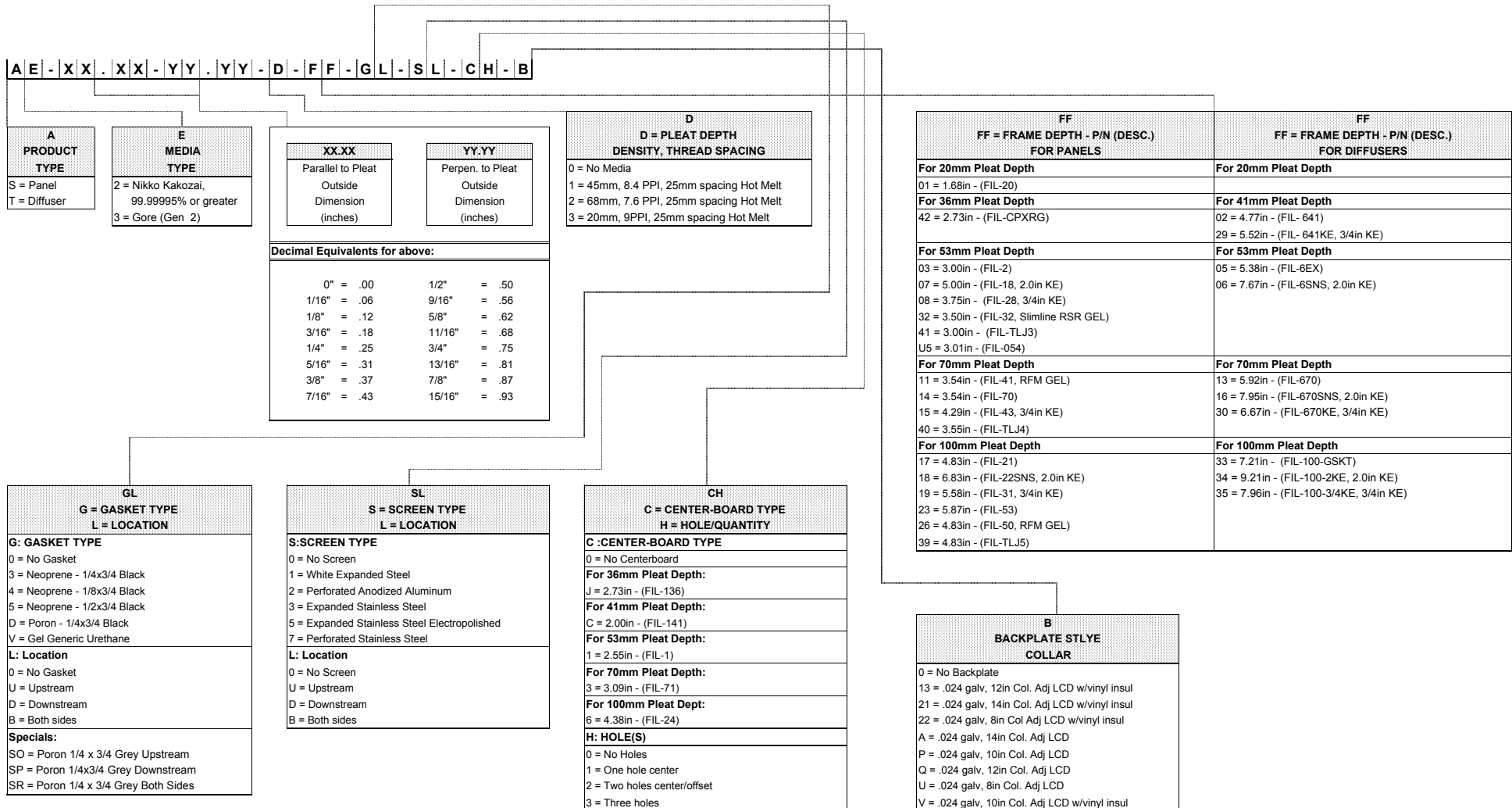
Examples:

3HCP-65-12246N
 3HCP-85-122012N
 3HCP-95-242412N
 3HCP8-65-12126N
 3HCP8-65M-242412N-1DF-1S
 3HCP8-85-12246N-0-2S
 3DHCP-65-12246N
 3DHCP-85-122412N
 3DHCP-95-242412N
 3DHCP8-65H-24246N
 3DHCP8-85-202012N
 3DHCP8-95-242412A

Product Class/Sub Class

1601 AEROPAC 65 FILTER 12"
1602 AEROPAC 85 FILTER 12"
1603 AEROPAC 95 FILTER 12"
1604 AEROPAC 65 FILTER 6"
1605 AEROPAC 85 FILTER 6"
1606 AEROPAC 95 FILTER 6"

E-PTFE Panel/Diffuser Model Number System



FILTRA 2000 Model Number System

Description 2 (first 30 characters of description)

Famod# RevA.xls 8/31/2005

F A 1 5 X X - E E - F M - X X / X X ,

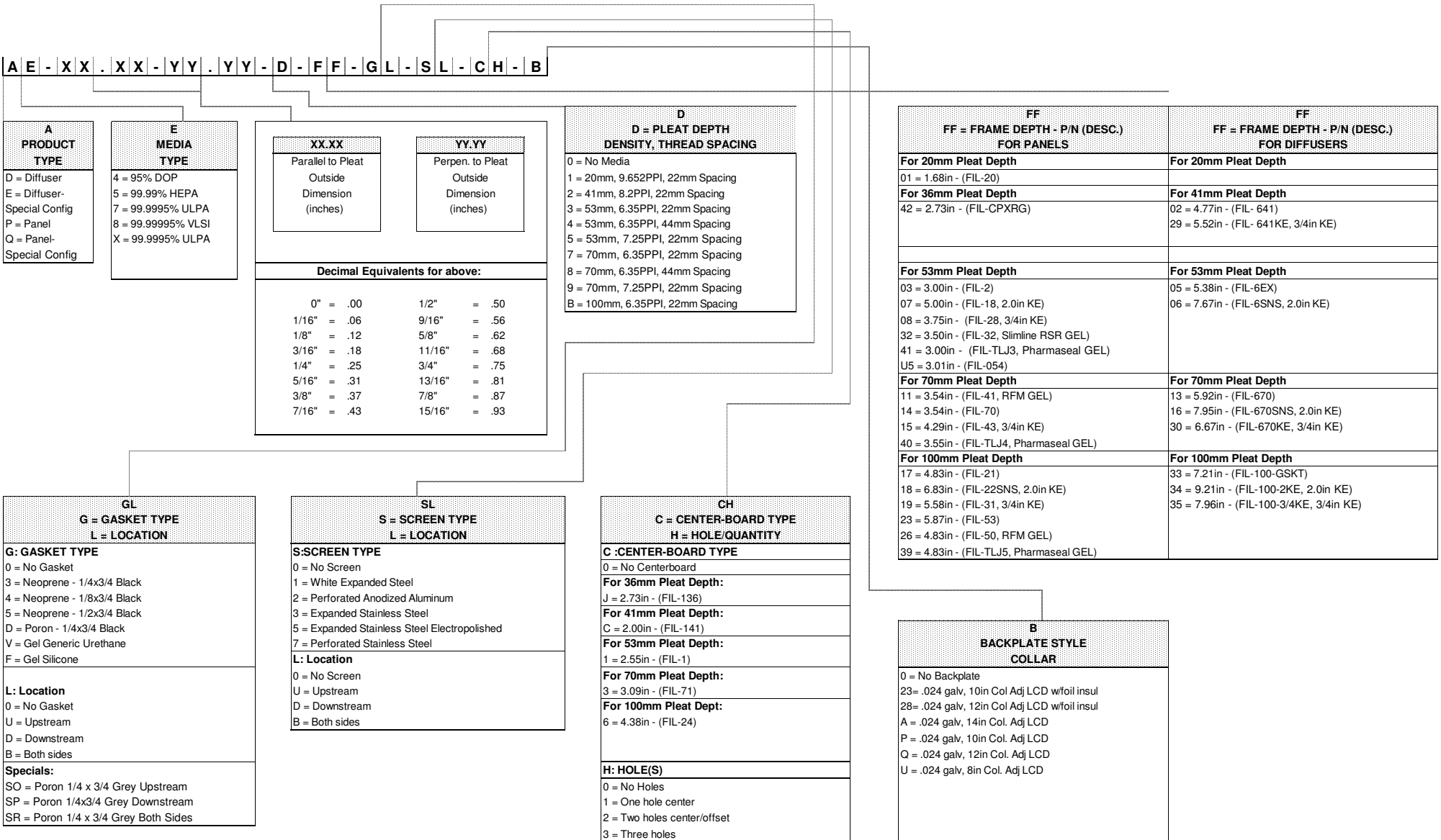
FA15XX PRODUCT SIZE/CONFIG.	
FA1560	24 x 24, 5V's, Gskt frame, hd pack
FA1561	24 x 24, 5V's, Gskt frame, std pack
FA1563	24 x 24, 3V's, Gskt frame, std pack
FA1564	24 x 12, 5V's, Gskt frame, std pack
FA1565	12 x 24, 2V's, Gskt frame, hd pack
FA1570	24 x 24, 5V's, Gel frame, hd pack
FA1571	24 x 24, 5V's, Gel frame, Std pack
FA1573	24 x 24, 3V's, Gel frame, std pack
FA1574	24 x 12, 5V's, Gel frame, hd pack
FA1575	12 x 24, 2V's, Gel frame, hd pack
FA1570A	24 x 24, 5V's, Gel frame, for Containment
FA1571A	24 x 24, 5V's, Gel frame, for Containment
FA1573A	24 x 24, 3V's, Gel frame, for Containment
FA1575A	12 x 24, 2V's, Gel frame, for Containment
FA1540	23-3/8 x 23-3/8, 5V's, Gskt frame, hd pack
FA1541	23-3/8 x 23-3/8, 5V's, Gskt frame, std pack
FA1543	23-3/8 x 23-3/8, 3V's, Gskt frame, std pack
FA1545	11-3/8 x 23-3/8, 2V's, Gskt frame, std pack
FA1550	23-3/8 x 23-3/8, 5V's, Gel frame, hd pack
FA1551	23-3/8 x 23-3/8, 5V's, Gel frame, std pack
FA1553	23-3/8 x 23-3/8, 3V's, Gel frame, std pack
FA1555	11-3/8 x 23-3/8, 2V's, Gel frame, hd pack

EE Efficiency Designation
01 - 99.99% @ 0.3 micron
02 - 99.999% @ 0.3 micron
03 - 95% @ 0.3 micron
09 - 99.995% @ MPPS (H14)

FM Frame Material / Type
01 - Extruded Anodized Aluminum
02 - Fabricated Anodized Aluminum
03 - Fabricated 304 Stainless Steel
04 - Fabricated Galvanized Steel
05 - Fabricated Galvaneal
06 - Fabricated 316 Stainless Steel

XX Options
01 - gaskets both sides (pour in place)
02 - no gaskets
04 - gasket upstream (pour in place)
05 - 1/4 x 1/2 Poron Downstream
08 - Gel Upstream
09 - W/Extraction Clips (Compatible with FA15XXA models only)

Panel/Diffuser Model Number System



Other configurations are available. Contact Riverdale factory for more information.

RFM Model Number System



RF Product Type
RF = RFM (Replaceable Filter Module)

MMMM Series Designation	
T-Bar Ceiling Modules (No Perimeter Trim/mtg holes)	1015 - Type "A" Includes 10" collar w/butterfly damper, seismic tabs. 1025 - Type "B" Includes 12" collar w/butterfly damper, seismic tabs.
Plaster/Gypsum Wallboard Ceiling Modules	1055 - Type "E" Includes 10" collar w/butterfly damper, aluminum mounting pads, stainless steel perimeter trim 1065 - Type "F" Includes 12" collar w/butterfly damper, aluminum mounting pads, stainless steel perimeter trim

SS Standard Module Sizes
18 - Nominal 24 inch (Length) x 24 inch (Width) - Actual size 23-5/8 in x 23-5/8 in
28 - Nominal 24 inch (Length) x 36 inch (Width) - Actual size 23-5/8 in x 35-5/8 in
38 - Nominal 24 inch (Length) x 48 inch (Width) - Actual size 23-5/8 in x 47-5/8 in

XX Module Options
01 - Aerosol Injection Ring (A.I.R.)
02 - 18 gauge perforated stainless steel grille
04 - 1-1/2in thick fiberglass insulation with foil backing (Top of module only)
07 - No grille
08 - 1-1/2 in thick fiberglass insulation with foil backing (Top/Side of module)

***Note:** All Standard RFM's should have the "02" option for the stainless steel screen in the description.

Slimline RSR Model Number System

S L | R S R | , | A A . A A - B B . B B - D D - X X

SL RSR
Product Type

SL RSR - Slimline RSR

DD
Collar Size

00 - No Backplate and Collar
06 - 6" Collar
08 - 8" Collar
10 - 10" Collar
12 - 12" Collar
14 - 14" Collar

Module Size

AA.AA	BB.BB
Parallel to Pleat Outside Dimensions (inches)	Perpendicular to Pleat Outside Dimensions (inches)

Decimal Equivalents For Above:

1/16" = .06	9/16" = .56
1/8" = .12	5/8" = .62
3/16" = .18	11/16" = .68
1/4" = .25	3/4" = .75
5/16" = .31	13/16" = .81
3/8" = .37	7/8" = .87
7/16" = .43	15/16" = .93
1/2" = .50	

List of Standard Sizes (A x B) - (Check Macola for Custom Sizes)

1-1/2in T-Bar Grid		2in T-Bar Grid	
23.62-23.62	(23-5/8 x 23-5/8)	23.12-23.12	(23-1/8 x 23-1/8)
23.62-35.62	(23-5/8 x 35-5/8)	23.12-35.12	(23-1/8 x 35-1/8)
23.62-41.62	(23-5/8 x 41-5/8)	23.12-41.12	(23-1/8 x 41-1/8)
23.62-47.62	(23-5/8 x 47-5/8)	23.12-47.12	(23-1/8 x 47-1/8)

XX
Model Options

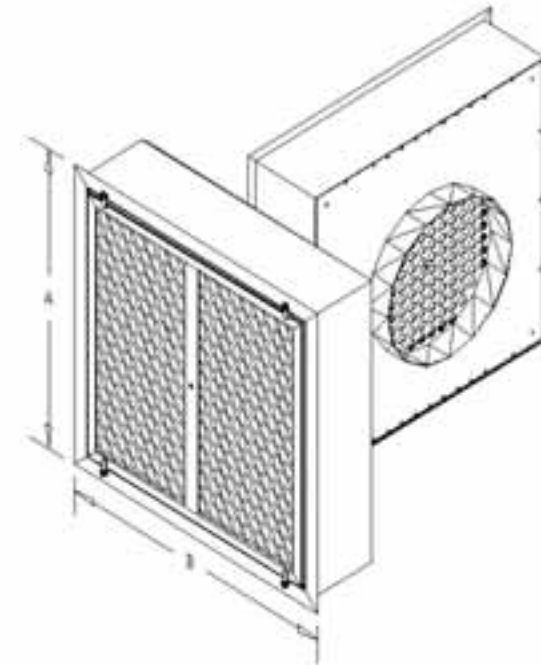
01 - Foil Backed Insulation For T-Bar Installation
(Top/Side of Module)

(Top/Side of Module)

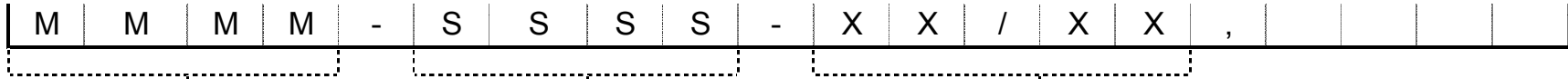
03 - Foil Backed Insulation For Gypsum Installatio
(Top of Module Only)

(Top of Module Only)

05 - Aluminum Hanging Tabs



Ultra-Pac Model Number System



MMMM Product Type
GGEM - 95% DOP Standard Capacity
TREM - 95% DOP High Capacity
GGEA - 99.99% Standard Capacity
TREA - 99.99% High Capacity

SSSS Size Designation (A x B) (A perpendicular to pleat; B parallel to pleat)
200 - 12 x 12
420 - 11-3/8 x 23-3/8
450 - 12 x 24
725 - 18 x 24
925 - 23-3/8 x 23-3/8
1000 - 24 x 24
1250 - 30 x 24

XX/XX Options
00 - No Gasket
01 - Gasket downstream
10 - Gasket upstream
11 - Gasket both sides

TABLE I - STANDARD UNIT AIRFLOW RATING

NO. OF FILTERS HIGH	1/2	1	1-1/2	2	2-1/2	3	3-1/2	4	4-1/2	5	5-1/2	6		
WIDTH INCHES	12.00	24.00	36.00	48.00	60.00	72.00	84.00	96.00	108.00	120.00	132.00	144.00	A	
AIRFLOW CAPACITIES (CFM), AT 500 FPM														
1/2	15.25	-	1,000	-	2,000	-	3,000	-	4,000	-	5,000	-	6,000	3.88
1	27.25	1,000	2,000	3,000	4,000	5,000	6,000	7,000	8,000	9,000	10,000	11,000	12,000	3.88
1-1/2	39.50	-	3,000	-	6,000	-	9,000	-	12,000	-	15,000	-	18,000	4.00
2	51.50	2,000	4,000	6,000	8,000	10,000	12,000	14,000	16,000	18,000	20,000	22,000	24,000	4.00
2-1/2	63.75	-	5,000	-	10,000	-	15,000	-	20,000	-	25,000	-	30,000	4.12
3	75.75	3,000	6,000	9,000	12,000	15,000	18,000	21,000	24,000	27,000	30,000	33,000	36,000	4.12
3-1/2	88.00	-	7,000	-	14,000	-	21,000	-	28,000	-	35,000	-	42,000	4.25
4	100.00	4,000	8,000	12,000	16,000	20,000	24,000	28,000	32,000	36,000	40,000	44,000	48,000	4.25

TABLE II FILTER OPTIONS

TYPE	DEPTH	
HI-FLO	15	0
	22	7.00
	30	15.00
	32	17.00
	36	21.00
HP	12	0
30/30	3/4	3.75
ULTRASLYVE	3/4	0
RIGA-FLO (6")	5.88	0
RIGA-FLO (12")	11.50	0
AEROPAC (6")	5.88	0
AEROPAC (12")	11.50	0
DURAFIL	11.50	0
RIGACARB	11.50	0
RIGA-RP	12.31	0

TABLE III G/P HOUSING OPTIONS

OPTION	DESCRIPTION
3P	STANDARD
3PD	INSULATED DOORS
3PI	FULLY INSULATED
3PH	HIGH PRESSURE (+/- 8" W.G.)
3PF	LESS HOLDING FRAMES
3PHD	HIGH PRESSURE, INSULATED DOORS
3PHI	HIGH PRESSURE, FULLY INSULATED
3PHDF	HIGH PRESSURE, INSULATED DOORS, LESS HOLDING FRAMES
3PHIF	HIGH PRESSURE, FULLY INSULATED, LESS HOLDING FRAMES

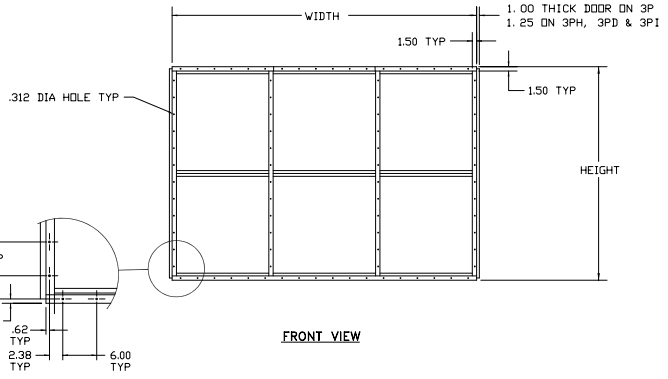
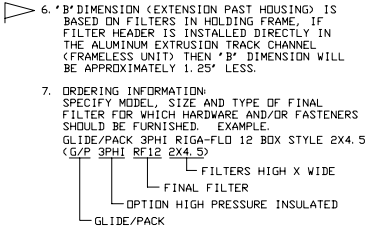
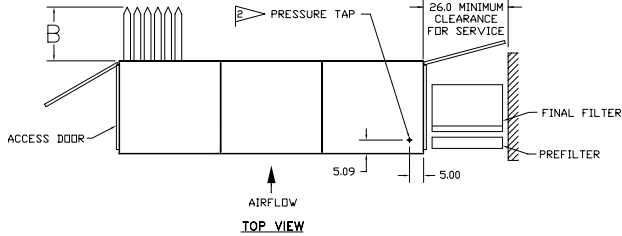
TABLE IV MANUFACTURING DRAWINGS	
3P	060125
3PH	064244
3PD	073912
3PHD	074376
3PI	075938
3PHI	077835

GENERAL NOTES:

- UNIT IS COMPLETELY FACTORY ASSEMBLED. FOR CAPACITY REFER TO TABLE I. FOR APPLICATION REFER TO SALES BULLETIN 2401-030E.
- STANDARD MATERIAL OF CONSTRUCTION: 16GA GALVANIZED STEEL HOUSING, EXTRUDED ALUMINUM TRACKS WITH FIN-SEAL (SEE DWG. 116159), PREFILTER CHANNEL, NEOPRENE DOOR GASKET, PHENOLIC KNOB FOR POSITIVE DOOR SEALING, 18GA GALVANIZED STEEL HOLDING FRAMES AND APPROPRIATE FILTER FASTENERS. PRESSURE TAP IS INSTALLED BETWEEN PREFILTER AND FINAL FILTER. (SEE DWG. 094805).
- THE HOLDING FRAME IS INTEGRAL PART OF THE RIGA-RP HOUSING, NO FASTENERS REQUIRED.
- DURAFIL AND RIGA-CARB REQUIRE C-70 FASTENERS WHEN INSTALLED IN HOLDING FRAME.
- HOUSING OPTIONS: (SPECIAL PRICING AND PART NUMBERS REQUIRED).
 - 16GA 304 OR 316 STAINLESS STEEL HOUSING AND EXTRUDED ALUMINUM TRACKS.
 - PRIMED ONLY (OR PRIMED AND PAINTED) INSIDE, OUTSIDE OR BOTH.
 - FIVE (5) FILTERS HIGH MAXIMUM AS ONE PIECE CONSTRUCTION.
 - OTHER SPECIAL OPTIONS REQUIRE CAMFIL FARR ENGINEERING CONSULTATION.
 - SEE TABLE II FOR FILTER OPTIONS. FILTERS ARE NOT INCLUDED WITH HOUSING, ORDER SEPARATELY.
- *B* DIMENSION (EXTENSION PAST HOUSING) IS BASED ON FILTERS IN HOLDING FRAME, IF FILTER HEADER IS INSTALLED DIRECTLY IN THE ALUMINUM EXTRUSION TRACK CHANNEL (FRAMELESS UNIT) THEN *B* DIMENSION WILL BE APPROXIMATELY 1.25" LESS.
- ORDERING INFORMATION: SPECIFY MODEL, SIZE AND TYPE OF FINAL FILTER FOR WHICH HARDWARE AND/OR FASTENERS SHOULD BE FURNISHED. EXAMPLE: GLIDE/PACK 3PHI RIGA-FLO 12 BOX STYLE 2X4.5 (G/P 3PHI RFLC 2X4.5)

PERFORMANCE NOTES:

- STANDARD HOUSING OPERATING PRESSURE TO +/- 3" W.G. WITH LESS THAN 0.5% LEAKAGE INTO HOUSING FRAME. LEAKAGE AROUND FILTER LESS THAN 1% AT 3" W.G. DIFFERENTIAL AT 2,000 CFM FOR 1X1 UNIT.
- OPERATING TEMPERATURE 250°F CONTINUOUS. MEETS NFPA 90A AND TESTED PER ASTM-E84.
- INSULATION ON INSULATED UNITS IS 1" THICK AND IS RATED AT 0.25-0.30 "K" FACTOR.
- RECOMMENDED PRESSURE GAUGE ACCURACY TO BE +/- 3% FROM 0.0-6.0 W.G.



P	01/29/03	REVISED TABLE IV	7691-R	SMA CAM	C650
A	06/27/75	FIRST ISSUE	7691-A	-	-
REV	DATE	DESCRIPTION	END	DFT	CK APP



DESCRIPTION	
GLIDE/PACK 3P, 3PD, 3PI, 3PH, 3PF, 3PHD, 3PHI, 3PHDF & 3PHIF 1/2 THRU 4 HIGH	
SHEET	DRAWING NUMBER
1 OF 1	060126
REV	REV
	P

TABLE I - STANDARD UNIT AIRFLOW RATING

NO. OF FILTERS WIDE	1/2	1	1-1/2	2	2-1/2	3	3-1/2	4	4-1/2	5	5-1/2	6	A	
WIDTH INCHES	12.00	24.00	36.00	48.00	60.00	72.00	84.00	96.00	108.00	120.00	132.00	144.00		
1	27.25	1,000	2,000	3,000	4,000	5,000	6,000	7,000	8,000	9,000	10,000	11,000	12,000	3.88
1-1/2	39.50	-	3,000	-	6,000	-	9,000	-	12,000	-	15,000	-	18,000	4.00
2	51.50	2,000	4,000	6,000	8,000	10,000	12,000	14,000	16,000	18,000	20,000	22,000	24,000	4.00
2-1/2	63.75	-	5,000	-	10,000	-	15,000	-	20,000	-	25,000	-	30,000	4.12
3	75.75	3,000	6,000	9,000	12,000	15,000	18,000	21,000	24,000	27,000	30,000	33,000	36,000	4.12
3-1/2	88.00	-	7,000	-	14,000	-	21,000	-	28,000	-	35,000	-	42,000	4.25
4	100.00	4,000	8,000	12,000	16,000	20,000	24,000	28,000	32,000	36,000	40,000	44,000	48,000	4.25

TABLE II FILTER OPTIONS

TYPE	DEPTH
30/30 (4")	3.75
ULTRASOLVE	3.75
RIGA-FLO (6")	5.88
AEROPAC (6")	5.88

TABLE III G/P HOUSING OPTIONS

OPTION	DESCRIPTION
4P	STANDARD
4PD	INSULATED DOORS
4PI	FULLY INSULATED
4PH	HIGH PRESSURE (+/- 8" W.G.)
4PF	LESS HOLDING FRAMES
4PHD	HIGH PRESSURE, INSULATED DOORS
4PHI	HIGH PRESSURE, FULLY INSULATED
4PHDF	HIGH PRESSURE, INSULATED DOORS, LESS HOLDING FRAMES
4PHIF	HIGH PRESSURE, FULLY INSULATED, LESS HOLDING FRAMES

GENERAL NOTES:

- UNIT IS COMPLETELY FACTORY ASSEMBLED. FOR CAPACITY REFER TO TABLE I. FOR APPLICATION REFER TO SALES BULLETIN 2405-0302.
- STANDARD MATERIAL OF CONSTRUCTION: 16GA GALVANIZED STEEL HOUSING, EXTRUDED ALUMINUM TRACKS WITH FIN-SEAL (SEE DWG. 121440), NEOPRENE DOOR GASKET, PHENOLIC KNOB FOR POSITIVE DOOR SEALING, 18GA GALVANIZED STEEL HOLDING FRAMES AND APPROPRIATE FILTER FASTENERS.
- HOUSING OPTIONS: (SPECIAL PRICING AND PART NUMBERS REQUIRED)
 - 16GA 304 OR 316 STAINLESS STEEL HOUSING AND EXTRUDED ALUMINUM TRACKS.
 - PRIMED ONLY (OR PRIMED AND PAINTED) INSIDE, OUTSIDE OR BOTH.
 - FIVE (5) FILTERS HIGH MAXIMUM AS ONE PIECE CONSTRUCTION.
 - ANY 4P HOUSING WITH 3P ALUMINUM TRACKS. ONLY 2" 30/30 CAN BE USED IN TRACK AND/OR HOLDING FRAME.
 - PRESSURE TAP AND FITTING (SEE DWG 094805)
 - OTHER SPECIAL OPTIONS REQUIRE CAMFIL FARR ENGINEERING CONSULTATION.
 - SEE TABLE II FOR FILTER OPTIONS. FILTERS ARE NOT INCLUDED WITH HOUSING, ORDER SEPARATELY.
- ORDERING INFORMATION: SPECIFY MODEL, SIZE AND TYPE OF FILTER FOR WHICH HARDWARE AND/OR FASTENERS SHOULD BE FURNISHED. EXAMPLE.

TABLE IV
MANUFACTURING DRAWINGS

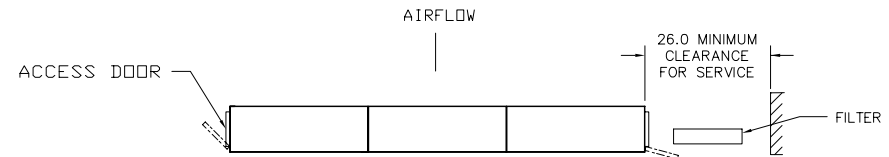
4P	071601	4PH	402012
4PD	077828	4PHD	111708
4PI	078230	4PHI	078231

GLIDE/PACK 4PHI RIGA-FLO 6 BOX STYLE 2X4.5 (G/P 4PHI RF6 2X4.5)

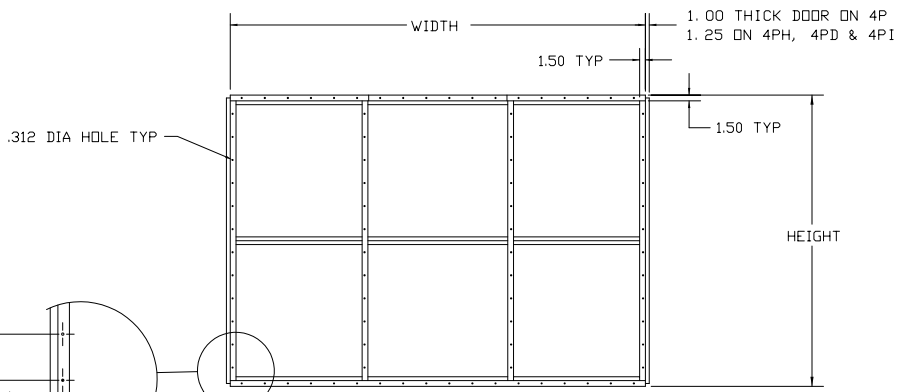
FILTERS HIGH X WIDE
 FINAL FILTER
 OPTION HIGH PRESSURE INSULATED
 GLIDE/PACK

PERFORMANCE NOTES:

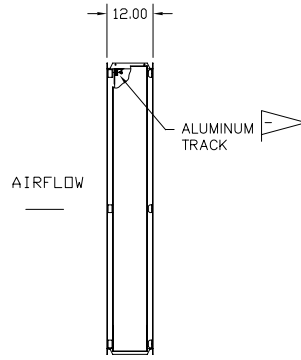
- STANDARD HOUSING OPERATING PRESSURE TO +/- 3" W.G. WITH LESS THAN 0.5% LEAKAGE INTO HOUSING FRAME. LEAKAGE AROUND FILTER LESS THAN 1% AT 3" W.G. 1% AT 3" W.G. DIFFERENTIAL AT 2,000 CFM FOR 1X1 UNIT.
- OPERATING TEMPERATURE 250°F CONTINUOUS. MEETS NFPA 90A AND TESTED PER ASTM-E84 TESTED PER ASTM-E84.
- INSULATION ON INSULATED UNITS IS 1" THICK AND IS RATED AT 0.25-0.30 "K" FACTOR



TOP VIEW



FRONT VIEW



SIDE VIEW

G	01/29/02	REVISED PER SALES	14955-D	JWC	CAM	Cesa
A	01/19/81	FIRST ISSUE	9434	JG	LAD	PZ
REV	DATE	DESCRIPTION	EWD	DFT	CK	APP



© Camfil Farr <http://www.camfilfarr.com>

DESCRIPTION
GLIDE/PACK 4P, 4PD, 4PI, 4PH, 4PF, 4PHD, 4PHI, 4PHDF & 4PHIF
1/2 THRU 4 HIGH

SHEET	DRAWING NUMBER	REV
1 OF 1	071601	G

TABLE I - STANDARD UNIT AIRFLOW RATING

NO. OF FILTERS WIDE	1/2	1	1-1/2	2	2-1/2	3	3-1/2	4	4-1/2	5	5-1/2	6	A		
WIDTH INCHES	12.00	24.00	36.00	48.00	60.00	72.00	84.00	96.00	108.00	120.00	132.00	144.00			
NO. OF FILTERS HIGH	AIRFLOW CAPACITIES (CFM) AT 500 FPM														
HEIGHT INCHES	1/2	15.25	-	1,000	-	2,000	-	3,000	-	4,000	-	5,000	-	6,000	3.88
1	27.25	1,000	2,000	3,000	4,000	5,000	6,000	7,000	8,000	9,000	10,000	11,000	12,000	3.88	
1-1/2	39.50	-	3,000	-	6,000	-	9,000	-	12,000	-	15,000	-	18,000	4.00	
2	51.50	2,000	4,000	6,000	8,000	10,000	12,000	14,000	16,000	18,000	20,000	22,000	24,000	4.00	
2-1/2	63.75	-	5,000	-	10,000	-	15,000	-	20,000	-	25,000	-	30,000	4.12	
3	75.75	3,000	6,000	9,000	12,000	15,000	18,000	21,000	24,000	27,000	30,000	33,000	36,000	4.12	
3-1/2	88.00	-	7,000	-	14,000	-	21,000	-	28,000	-	35,000	-	42,000	4.25	
4	100.00	4,000	8,000	12,000	16,000	20,000	24,000	28,000	32,000	36,000	40,000	44,000	48,000	4.25	

TABLE II
FILTER OPTIONS

TYPE	DEPTH
30/30 (4")	3.75
ULTRASOLVE	3.75
RIGA-FLO (6")	5.88
AEROPAC (6")	5.88

TABLE III
G/P HOUSING OPTIONS

OPTION	DESCRIPTION
5P	STANDARD

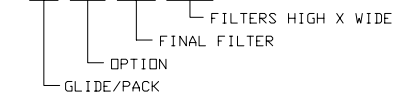
TABLE IV
MANUFACTURING DRAWINGS

5P	401912
----	--------

GENERAL NOTES:

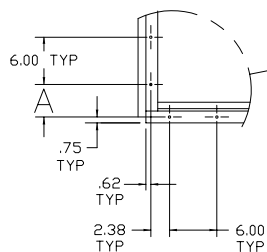
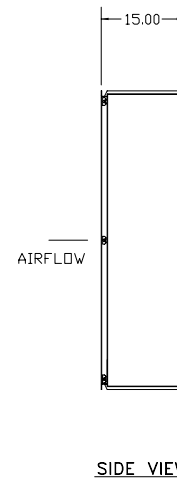
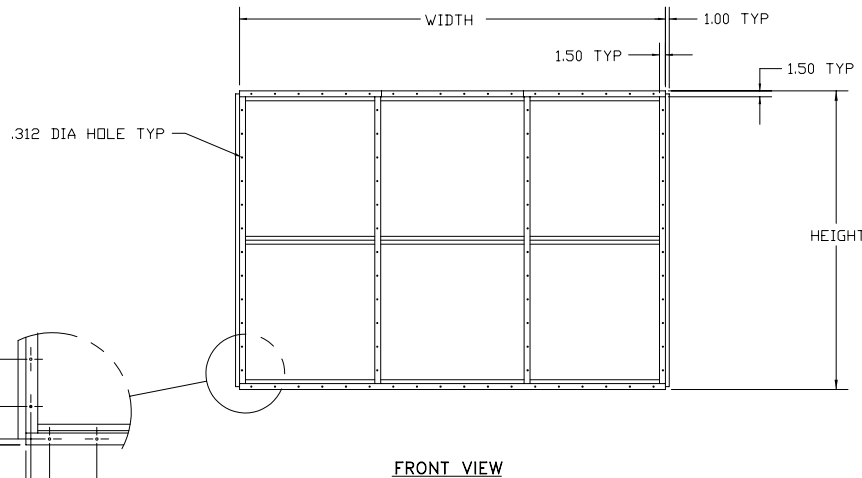
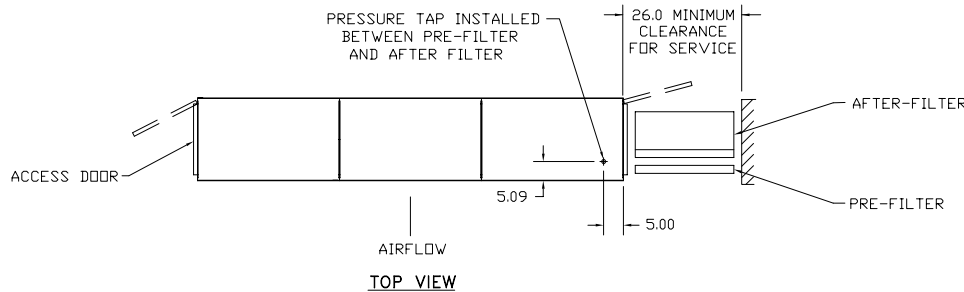
- UNIT IS COMPLETELY FACTORY ASSEMBLED. FOR CAPACITY REFER TO TABLE I. FOR APPLICATION REFER TO SALES BULLETIN 2420-0202.
- STANDARD MATERIAL OF CONSTRUCTION: 16GA GALVANIZED STEEL HOUSING, EXTRUDED ALUMINUM TRACKS WITH FIN-SEAL (SEE DWG. 116158), NEOPRENE DOOR GASKET, PHENOLIC KNOB FOR POSITIVE DOOR SEALING, 18GA GALVANIZED STEEL HOLDING FRAMES AND APPROPRIATE FILTER FASTENERS.
- HOUSING OPTIONS: (SPECIAL PRICING AND PART NUMBERS REQUIRED)
 - 16GA 304 OR 316 STAINLESS STEEL HOUSING AND EXTRUDED ALUMINUM TRACKS.
 - PRIMED ONLY (OR PRIMED AND PAINTED) INSIDE, OUTSIDE OR BOTH.
 - FIVE (5) FILTERS HIGH MAXIMUM AS ONE PIECE CONSTRUCTION.
 - ANY 5P HOUSING WITH 6P ALUMINUM TRACKS. ONLY 2' AND 4' 30/30 CAN BE USED IN TRACK IN COMBINATION WITH HOLDING FRAME.
 - PRESSURE TAP AND FITTING (SEE DWG. 094805)
 - OTHER SPECIAL OPTIONS REQUIRE CAMFIL FARR ENGINEERING CONSULTATION.
 - SEE TABLE II FOR FILTER OPTIONS. FILTERS ARE NOT INCLUDED WITH HOUSING, ORDER SEPARATELY.
- ORDERING INFORMATION: SPECIFY MODEL, SIZE AND TYPE OF FILTER FOR WHICH HARDWARE AND/OR FASTENERS SHOULD BE FURNISHED. EXAMPLE.

GLIDE/PACK 5P RIGA-FLO 6 BOX STYLE 2X4.5 (G/P 4P RF6 2X4.5)



PERFORMANCE NOTES:

- STANDARD HOUSING OPERATING PRESSURE TO +/- 3" W.G. WITH LESS THAN 0.5% LEAKAGE INTO HOUSING FRAME. LEAKAGE AROUND FILTER LESS THAN 1% AT 3" W.G. 1% AT 3" W.G. DIFFERENTIAL AT 2,000 CFM FOR 1X1 UNIT.
- OPERATING TEMPERATURE 250°F CONTINUOUS. MEETS NFPA 90A AND TESTED PER ASTM-E84 TESTED PER ASTM-E84.
- INSULATION ON INSULATED UNITS IS 1" THICK AND IS RATED AT 0.25-0.30 "K" FACTOR



C	03/30/02	REVISED PER SALES	14955-D	JWC	CAM	Cesar
A	03/21/00	FIRST ISSUE	16043-A	RG	CAM	Cesar
REV	DATE	DESCRIPTION	EWD	DFT	CK	APP



© Camfil Farr <http://www.camfilfarr.com>

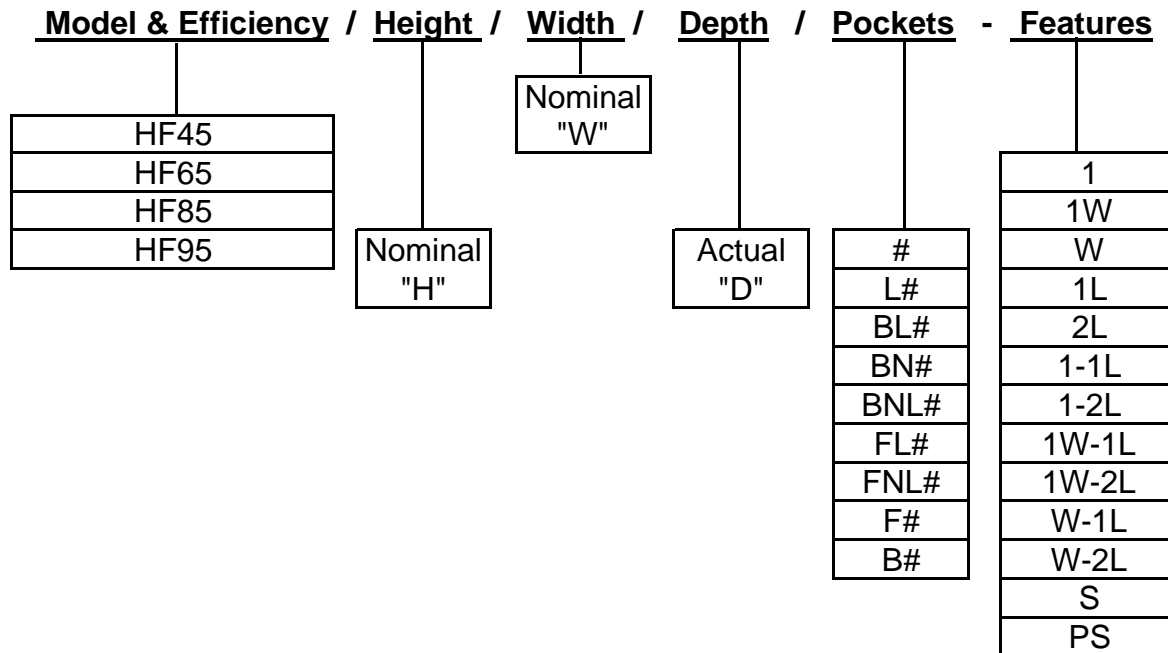
DESCRIPTION
GLIDE/PACK 5P
1/2 THRU 4 HIGH

SHEET	DRAWING NUMBER	REV
1 OF 1	401912	C

MFG. DWG. (SEE TABLE IV)

Final Filters- Hi-Flo

Mac Pac Descriptions



Abbreviations

# =	Actual Quantity of Pockets
L=	Pockets with loops
B=	Gasket Backside of header(Downstream)
BN=	Neoprene Gasket on Backside of Header (Downstream)
F=	Gasket Frontside of header (Upstream)
FN=	Neoprene Gasket on Frontside of Header(Upstream)
PS=	Polyfoam gasket (Special location)
1=	Class 1
W=	1 1/8 Header
1W=	Class 1, 1 1/8 Header
1L=	1 loop per pocket
2L=	Two(2) loops per pocket
S=	Special feature (refer to drawing)

Examples:

HF45/12/24/15/12-1W
 HF45/12/24/32/6
 HF65/20/20/22/B7
 HF65/24/12/30/L4-1L
 HF85/24/12/30/F4
 HF85/24/24/36/6-S
 HF95/20/24/30/L8-2L
 HF95/24/12/13/L6-1-2L
 HF95/24/12/22/B5

Product Class/Sub Class

1201 HI-FLO FILTERS 45
 1202 HI-FLO FILTERS 65
 1203 HI-FLO FILTERS 85
 1204 HI-FLO FILTERS 95

ACTUAL SIZE		POCKET DEPTH	NOMINAL SIZE	ORDERING REFERENCE								NUMBER OF POCKETS
H	W	L		MEDIA EFFICIENCY VS PART NUMBER								
				HF45	HF45-W	HF65	HF65-W	HF85	HF85-W	HF95	HF95-W	
23.31	23.31	15, 22, 30, 32, 36	24/24/L	402456A**	402461A**	402458A**	401740A**	402460A**	401741A**	402462A**	401742A**	6
23.31	19.31		24/20/L	402456B**	402461B**	402458B**	401740B**	402460B**	401741B**	402462B**	401742B**	5
23.31	11.31		24/12/L	402456C**	402461C**	402458C**	401740C**	402460C**	401741C**	402462C**	401742C**	3
19.31	19.31		20/20/L	402456D**	402461D**	402458D**	401740D**	402460D**	401741D**	402462D**	401742D**	5
19.31	23.31		20/24/L	402456E**	402461E**	402458E**	401740E**	492460E**	401741E**	402462E**	401742E**	6
11.31	23.31	12/24/L	402456F**	402461F**	402458F**	401740F**	402460F**	401741F**	402462F**	401742F**	6	

23.31	23.31	15, 22, 30, 32, 36	24/24/L	402459A**	402498A**	402501A**	401745A**	402502A**	401757A**	402503A**	401758A**	8
23.31	19.31		24/20/L	402459B**	402498B**	402501B**	401745B**	402502B**	401757B**	402503B**	401758B**	7
23.31	11.31		24/12/L	402459C**	402498C**	402501C**	401745C**	402502C**	401757C**	402503C**	401758C**	4
19.31	19.31		20/20/L	402459D**	402498D**	402501D**	401745D**	402502D**	401757D**	402503D**	401758D**	7
19.31	23.31		20/24/L	402459E**	402498E**	402501E**	401745E**	402502E**	401757E**	402503E**	401758E**	8
11.31	23.31	12/24/L	402459F**	402498F**	402501F**	401745F**	402502F**	401757F**	402503F**	401758F**	8	

23.31	23.31	15, 22, 30, 32, 36	24/24/L	402463A**	402499A**	401771A**	401760A**	402504A**	401761A**	401775A**	401764A**	10
23.31	19.31		24/20/L	402463B**	402499B**	401771B**	401760B**	402504B**	401761B**	401775B**	401764B**	8
23.31	11.31		24/12/L	402463C**	402499C**	401771C**	401760C**	402504C**	401761C**	401775C**	401764C**	5
19.31	19.31		20/20/L	402463D**	402499D**	401771D**	401760D**	402504D**	401761D**	401775D**	401764D**	8
19.31	23.31		20/24/L	402463E**	402499E**	401771E**	401760E**	402504E**	401761E**	401775E**	401764E**	10
11.31	23.31	12/24/L	402463F**	402499F**	401771F**	401760F**	402504F**	401761F**	401775F**	401764F**	10	

23.31	23.31	15, 22, 30, 32, 36	24/24/L	402479A**	402500A**	401772A**	401765A**	401773A**	401766A**	401774A**	401769A**	12
23.31	19.31		24/20/L	402479B**	402500B**	401772B**	401765B**	401773B**	401766B**	401774B**	401769B**	9
23.31	11.31		24/12/L	402479C**	402500C**	401772C**	401765C**	401773C**	401766C**	401774C**	401769C**	6
19.31	19.31		20/20/L	402479D**	402500D**	401772D**	401765D**	401773D**	401766D**	401774D**	401769D**	9
19.31	23.31		20/24/L	402479E**	402500E**	401772E**	401765E**	401773E**	401766E**	401774E**	401769E**	12
11.31	23.31	12/24/L	402479F**	402500F**	401772F**	401765F**	401773F**	401766F**	401774F**	401769F**	12	

GENERAL NOTES:

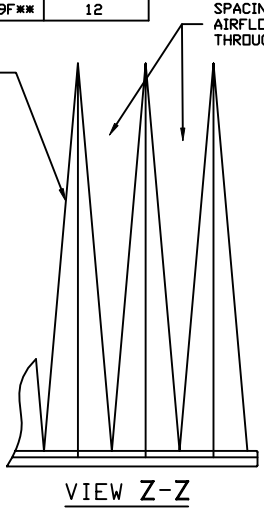
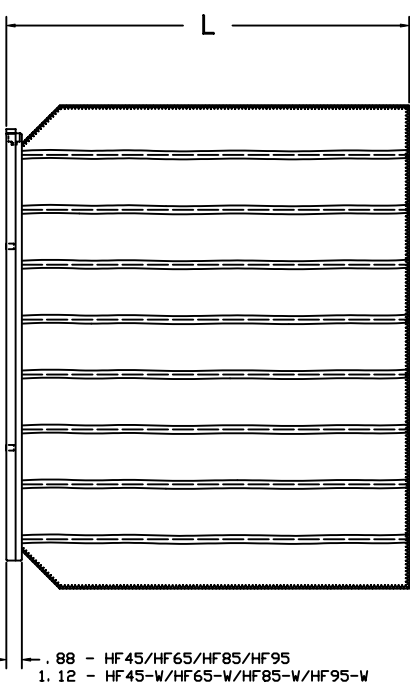
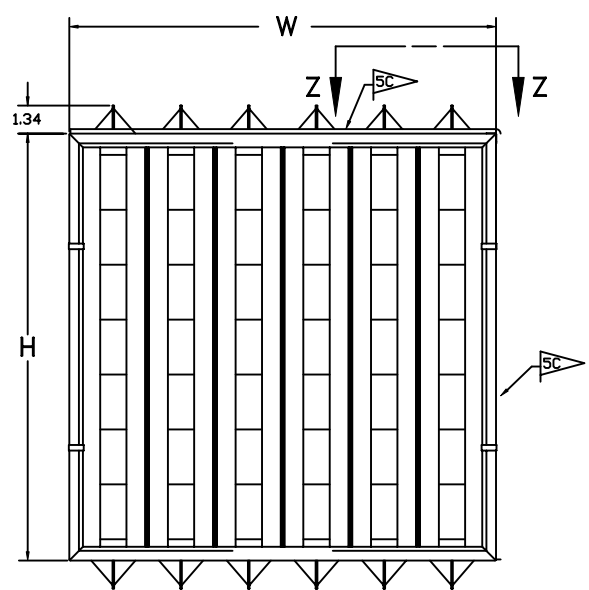
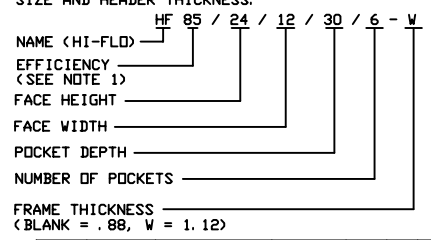
- MEDIUM EFFICIENCY, MERV 9-14 (45-95%) EXTENDED SURFACE DISPOSABLE. FILTER EFFICIENCY IS MINIMUM MERV RATING WHEN TESTED IN ACCORDANCE WITH ASHRAE 52.2-1999 AND MINIMUM DUST SPOT EFFICIENCY WHEN TESTED IN ACCORDANCE WITH ASHRAE 52.1-1992.
- AVAILABLE SIZES (NOMINAL) AND EFFICIENCIES: SEE TABULATION BLOCK. REFER TO MODEL DESIGNATION FOR PROPER PART NUMBER.
- SEE CAMFIL FARR BULLETIN 1203-0602 FOR OTHER FEATURES, CONSTRUCTION AND PERFORMANCE CHARACTERISTICS.
- FILTER CLASSIFIED BY UNDERWRITERS LABORATORIES AS TO FLAMABILITY ONLY U.L. CLASS 2.
- PHYSICAL DATA (MATERIALS OF CONSTRUCTION):
 - HEADER FRAME, RETAINERS, RETAINER AND CORNER CLIPS, GALVANIZED STEEL.
 - MEDIA: HIGH LOFTED AIR LAID FIBERGLASS STITCHED TO A UNIFORM TAPERED POCKET WIDTH, BONDED TO RETAINERS AND HEADER FRAME.
 - GASKET (1/4 X 1/2 THICK) POLYURETHANE FOAM IS INSTALLED ONLY ON 'H' SIDE OF 24X24, 24X20 & 20X20 FILTERS AND BOTH 'H' & 'W' SIDES OF 24X12 & 12X24 FILTERS
- REPLACE "*" IN THE PART NUMBER WITH RESPECTIVE POCKET DEPTH (L = 15, 22, 30, 32 OR 36).
 EXAMPLE:
 HF45/24/20/30/6 ORDERING REFERENCE = 402456B30 (PART NUMBER).
 HF65/20/20/32/8-W ORDERING REFERENCE = 401745D32 (PART NUMBER).

ORDERING INFORMATION:

- THE FILTER NOMINAL FACE HEIGHT AND WIDTH DIMENSIONS ARE PRECEDED BY THE EFFICIENCY AND SUPERSEDED BY THE NUMBER OF POCKETS TO CREATE THE MODEL DESIGNATION. THE DEPTH IS INDICATED BY THE ACTUAL VALUE 15, 22, 30, 32 OR 36. THE 1.12" HEADER THICKNESS IS INDICATED BY "W" AT THE END OF THE MODEL DESIGNATION.
- THE NINE DIGIT ALPHANUMERIC IS THE RESPECTIVE PART NUMBER TO BE ORDERED. WHEN ORDERING, INDICATE MODEL DESIGNATION AND ALPHANUMERIC PART NUMBER.
 EXAMPLE:
 HF65/24/20/22/8 = P/N 402501B22

ORDERING INSTRUCTIONS:

CONTACT CAMFIL FARR FOR AVAILABILITY OF OTHER SPECIAL SIZES AND FEATURES. SPECIFY BY NAME/EFFICIENCY/FACE DIMENSIONS/POCKET DEPTH/POCKET SIZE AND HEADER THICKNESS.



SPACING FOR UNIFORM AIRFLOW VELOCITY THROUGH MEDIA.

VIEW Z-Z

PERFORMANCE NOTES:

- SEE BULLETIN 1203-0602 FOR PRESSURE DROP (INITIAL AND FINAL), MEDIA AREA AND AIRFLOW CAPACITY. PERFORMANCE TOLERANCE IS IN ACCORDANCE WITH THE AIR STANDARD 850, SECTION 7.4.
- CAMFIL FARR RECOMMENDS FILTERS TO BE INSTALLED WITH THE PLEATS RUNNING PARALLEL TO HEIGHT DIMENSION.
- OPERATING TEMPERATURE:
 - CONTINUOUS = 160°F
 - INTERMITTENT = 200°F
- SEE BULLETIN 1203-0602 FOR LIFE CYCLE VS EFFICIENCY GRAPH.
- RECOMMENDED FINAL RESISTANCE TO BE 1.0" W.G.

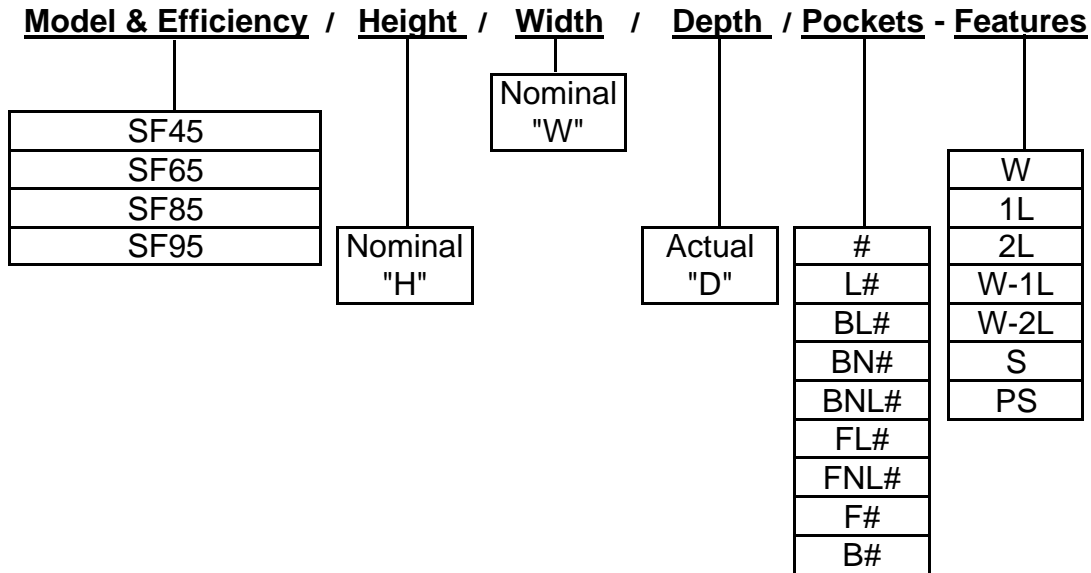
.88 - HF45/HF65/HF85/HF95
 1.12 - HF45-W/HF65-W/HF85-W/HF95-W

MFG. DWG. (SEE ORDERING REF.)

E	08/08/02	REVISED PER SALES	13818-GL	JVC	CAM	Cesor
A	02/27/98	FIRST ISSUE	14126-B	RR		Cesor
REV.	DATE	DESCRIPTION	EWO	DFT	CK	APP
©Camfil Farr http://www.camfilfarr.com						
DESCRIPTION						
HI-FLO CL2 FILTER						
HF45, HF65, HF85 & HF95 WITH .88 HEADER FRAME						
HF45-W, HF65-W, HF85-W & HF95-W WITH 1.12 HEADER FRAME						
SHEET	DRAWING NUMBER:				REV.	
1 OF 1	400442				E	

Final Filters- S-Flo

Mac Pac Descriptions



Abbreviations

= Actual Quantity of Pockets
 L= Pockets with loops
 B= Gasket Backside of header(Downstream)
 BN= Neoprene Gasket on Backside of Header (Downstream)
 F= Gasket Frontside of header (Upstream)
 FN= Neoprene Gasket on Frontside of Header(Upstream)
 PS= Polyfoam gasket (Special location)
 W= 1 1/8 Header
 1L= 1 loop per pocket
 2L= Two(2) loops per pocket
 S= Special feature (refer to drawing)

Example

SF45/12/24/30/10
 SF45/12/24/36/10-W
 SF65/24/12/22/L5-2L
 SF65/24/12/30/B4
 SF85/20/24/22/10
 SF85/24/12/30/B5-PS
 SF95/24/24/32/8
 SF95/24/20/15/6-S

Product Class/Sub Class

1208 S-FLO FILTERS 45
 1207 S-FLO FILTERS 65
 1205 S-FLO FILTERS 85
 1206 S-FLO FILTERS 95

ACTUAL SIZE		POCKET DEPTH	NOMINAL SIZE	ORDERING REFERENCE								NUMBER OF POCKETS
H	W	L		MEDIA EFFICIENCY VS PART NUMBER								
				SF45	SF45-W	SF65	SF65-W	SF85	SF85-W	SF95	SF95-W	
23.31	23.31	15, 22, 30, 32, 36	24/24/L	402918A**	402922A**	122524A**	125182A**	119787A**	120787A**	119788A**	120788A**	6
23.31	19.31		24/20/L	402918B**	402922B**	122524B**	125182B**	119787B**	120787B**	119788B**	120788B**	5
23.31	11.31		24/12/L	402918C**	402922C**	122524C**	125182C**	119787C**	120787C**	119788C**	120788C**	3
19.31	19.31		20/20/L	402918D**	402922D**	122524D**	125182D**	119787D**	120787D**	119788D**	120788D**	5
19.31	23.31		20/24/L	402918E**	402922E**	122524E**	125182E**	119787E**	120787E**	119788E**	120788E**	6
11.31	23.31		12/24/L	402918F**	402922F**	122524F**	125182F**	119787F**	120787F**	119788F**	120788F**	6
23.31	23.31	15, 22, 30, 32, 36	24/24/L	402919A**	402923A**	122525A**	125183A**	119789A**	120789A**	119790A**	120790A**	8
23.31	19.31		24/20/L	402919B**	402923B**	122525B**	125183B**	119789B**	120789B**	119790B**	120790B**	7
23.31	11.31		24/12/L	402919C**	402923C**	122525C**	125183C**	119789C**	120789C**	119790C**	120790C**	4
19.31	19.31		20/20/L	402919D**	402923D**	122525D**	125183D**	119789D**	120789D**	119790D**	120790D**	7
19.31	23.31		20/24/L	402919E**	402923E**	122525E**	125183E**	119789E**	120789E**	119790E**	120790E**	8
11.31	23.31		12/24/L	402919F**	402923F**	122525F**	125183F**	119789F**	120789F**	119790F**	120790F**	8
23.31	23.31	15, 22, 30, 32, 36	24/24/L	402920A**	402924A**	122526A**	125184A**	119791A**	120791A**	119792A**	120792A**	10
23.31	19.31		24/20/L	402920B**	402924B**	122526B**	125184B**	119791B**	120791B**	119792B**	120792B**	8
23.31	11.31		24/12/L	402920C**	402924C**	122526C**	125184C**	119791C**	120791C**	119792C**	120792C**	5
19.31	19.31		20/20/L	402920D**	402924D**	122526D**	125184D**	119791D**	120791D**	119792D**	120792D**	8
19.31	23.31		20/24/L	402920E**	402924E**	122526E**	125184E**	119791E**	120791E**	119792E**	120792E**	10
11.31	23.31		12/24/L	402920F**	402924F**	122526F**	125184F**	119791F**	120791F**	119792F**	120792F**	10
23.31	23.31	15, 22, 30, 32, 36	24/24/L	402921A**	402925A**	122527A**	125185A**	119793A**	120793A**	119794A**	120794A**	12
23.31	19.31		24/20/L	402921B**	402925B**	122527B**	125185B**	119793B**	120793B**	119794B**	120794B**	9
23.31	11.31		24/12/L	402921C**	402925C**	122527C**	125185C**	119793C**	120793C**	119794C**	120794C**	6
19.31	19.31		20/20/L	402921D**	402925D**	122527D**	125185D**	119793D**	120793D**	119794D**	120794D**	9
19.31	23.31		20/24/L	402921E**	402925E**	122527E**	125185E**	119793E**	120793E**	119794E**	120794E**	12
11.31	23.31		12/24/L	402921F**	402925F**	122527F**	125185F**	119793F**	120793F**	119794F**	120794F**	12

GENERAL NOTES:

- MEDIUM EFFICIENCY, MERV 9-14 (45-95%) EXTENDED SURFACE DISPOSABLE. FILTER EFFICIENCY IS MINIMUM MERV RATING WHEN TESTED IN ACCORDANCE WITH ASHRAE 52.2-1999 AND MINIMUM DUST SPOT EFFICIENCY WHEN TESTED IN ACCORDANCE WITH ASHRAE 52.1-1992.
- AVAILABLE SIZES (NOMINAL) AND EFFICIENCIES: SEE TABULATION BLOCK. REFER TO MODEL DESIGNATION FOR PROPER PART NUMBER.
- SEE CAMFIL FARR BULLETIN 1205-0602 FOR OTHER FEATURES, CONSTRUCTION AND PERFORMANCE CHARACTERISTICS.
- FILTER CLASSIFIED BY UNDERWRITERS LABORATORIES AS TO FLAMABILITY ONLY U.L. CLASS 2.
- PHYSICAL DATA (MATERIALS OF CONSTRUCTION):
 - HEADER FRAME, RETAINERS, RETAINER AND CORNER CLIPS, GALVANIZED STEEL.
 - MEDIA: HIGH DENSITY MELT BLOWN SYNTHETIC STITCHED TO A UNIFORM POCKET WIDTH, BONDED TO RETAINERS AND HEADER FRAME.
 - GASKET (1/4 X 1/2 THICK) POLYURETHANE FOAM IS INSTALLED ONLY ON 'H' SIDE OF 24X24, 24X20 & 20X20 FILTERS AND BOTH 'H' & 'W' SIDES OF 24X12 & 12X24 FILTERS
- REPLACE "*" IN THE PART NUMBER WITH RESPECTIVE POCKET DEPTH (L = 15, 22, 30, 32 OR 36).
 EXAMPLE:
 SF45/24/20/30/6 ORDERING REFERENCE = 402918B30 (PART NUMBER).
 SF65/20/20/32/8-W ORDERING REFERENCE = 125183D32 (PART NUMBER).

ORDERING INFORMATION:

- THE FILTER NOMINAL FACE HEIGHT AND WIDTH DIMENSIONS ARE PRECEDED BY THE EFFICIENCY AND SUPERSEDED BY THE NUMBER OF POCKETS TO CREATE THE MODEL DESIGNATION. THE DEPTH IS INDICATED BY THE ACTUAL VALUE 15, 22, 30, 32 OR 36. THE 1.12" HEADER THICKNESS IS INDICATED BY "W" AT THE END OF THE MODEL DESIGNATION.
- THE NINE DIGIT ALPHANUMERIC IS THE RESPECTIVE PART NUMBER TO BE ORDERED. WHEN ORDERING, INDICATE MODEL DESIGNATION AND ALPHANUMERIC PART NUMBER.
 EXAMPLE:
 SF65/24/20/22/8 = P/N 122525B22

ORDERING INSTRUCTIONS:

CONTACT CAMFIL FARR FOR AVAILABILITY OF OTHER SPECIAL SIZES AND FEATURES. SPECIFY BY NAME/EFFICIENCY/FACE DIMENSIONS/POCKET DEPTH/POCKET SIZE AND HEADER THICKNESS.

NAME (S-FLOW) SF 85 / 24 / 12 / 30 / 6 - W

EFFICIENCY (SEE NOTE 1) _____

FACE HEIGHT _____

FACE WIDTH _____

POCKET DEPTH _____

NUMBER OF POCKETS _____

FRAME THICKNESS _____
 (BLANK = .88, W = 1.12)

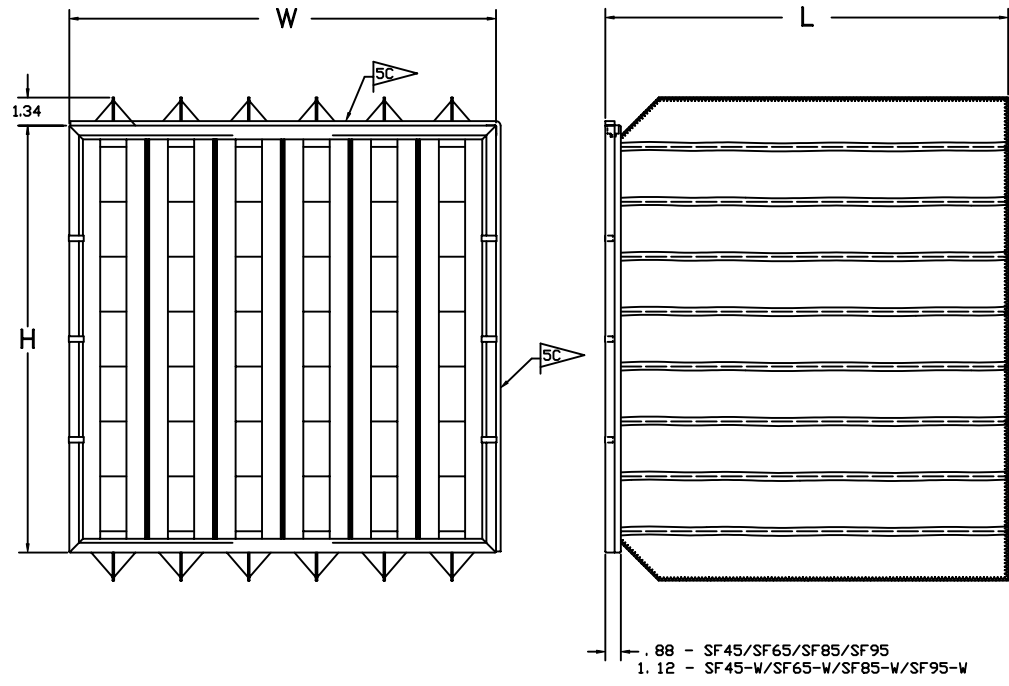
K	07/30/02	REVISED PER CAM	13818-GR	AC	CAM	Cesro
A	06/29/93	FIRST ISSUE	13818	JVC	LL	LL
REV.	DATE	DESCRIPTION	EWO	DFT	CK	APP



©Camfil Farr <http://www.camfilfarr.com>

DESCRIPTION
 S-FLO CL2 FILTER
 SF45, SF65, SF85 & SF95 WITH .88 HEADER FRAME
 SF45-W, SF65-W, SF85-W & SF95-W WITH 1.12 HEADER FRAME

SHEET	DRAWING NUMBER:	REV.
1 OF 1	120166	K



PERFORMANCE NOTES:

- SEE BULLETIN 1205-0602 FOR PRESSURE DROP (INITIAL AND FINAL), MEDIA AREA AND AIRFLOW CAPACITY. PERFORMANCE TOLERANCE IS IN ACCORDANCE WITH THE AIR STANDARD 850, SECTION 7.4.
- CAMFIL FARR RECOMMENDS FILTERS TO BE INSTALLED WITH THE PLEATS RUNNING PARALLEL TO HEIGHT DIMENSION.
- OPERATING TEMPERATURE:
 - CONTINUOUS = 160°F
 - INTERMITTENT = 180°F
- SEE BULLETIN 1205-0602 FOR LIFE CYCLE VS EFFICIENCY GRAPH.
- RECOMMENDED FINAL RESISTANCE TO BE 1.0" W.G.

TABLE I - STANDARD UNIT AIRFLOW RATING

NO. OF FILTERS WIDE	AIRFLOW RATING												
	1/2	1	1-1/2	2	2-1/2	3	3-1/2	4	4-1/2	5	5-1/2	6	
WIDTH INCHES	14.38	26.38	40.00	52.00	65.62	77.62	91.25	103.25	116.88	128.88	142.50	154.50	
HEIGHT INCHES	AIRFLOW CAPACITIES (CFM)												
1/2	16.50	-	1,000	-	2,000	-	3,000	-	4,000	-	5,000	-	6,000
1	28.50	1,000	2,000	3,000	4,000	5,000	6,000	7,000	8,000	9,000	10,000	11,000	12,000
1-1/2	40.50	-	3,000	-	6,000	-	9,000	-	12,000	-	15,000	-	18,000
2	52.50	2,000	4,000	6,000	8,000	10,000	12,000	14,000	16,000	18,000	20,000	22,000	24,000
2-1/2	64.50	-	5,000	-	10,000	-	15,000	-	20,000	-	25,000	-	30,000
3	76.50	3,000	6,000	9,000	12,000	15,000	18,000	21,000	24,000	27,000	30,000	33,000	36,000
3-1/2	88.50	-	7,000	-	14,000	-	21,000	-	28,000	-	35,000	-	42,000
4	100.50	4,000	8,000	12,000	16,000	20,000	24,000	28,000	32,000	36,000	40,000	44,000	48,000

TABLE II M/P HOUSING OPTIONS

OPTION	DESCRIPTION	FILTER DEPTH
4-6	STANDARD	5.88"
4-12		11.50"
4-6 PF	PREFILTER OPTION	5.88"
4-12 PF		11.50"
4-6 I	FULLY INSULATED	5.88"
4-12 I		11.50"
4-6 I PF	FULLY INSULATED WITH PREFILTER OPTION	5.88"
4-12 I PF		11.50"
4-6 304SS	304 STAINLESS STEEL	5.88"
4-12 304SS		11.50"
4-6 PF 304SS	304 STAINLESS STEEL WITH PREFILTER OPTION	5.88"
4-12 PF 304SS		11.50"

TABLE III MANUFACTURING DRAWINGS

4-6	063330	4-6 I PF	400131
4-6 PF	063330	4-12 I PF	117926
4-6 PF	070712	4-6 304SS	094115
4-12 PF	070713	4-12 304SS	094114
4-6 I	400130	4-6 PF 304SS	094112
4-12 I	096183	4-12 PF 304SS	094113

TABLE IV FILTER OPTIONS

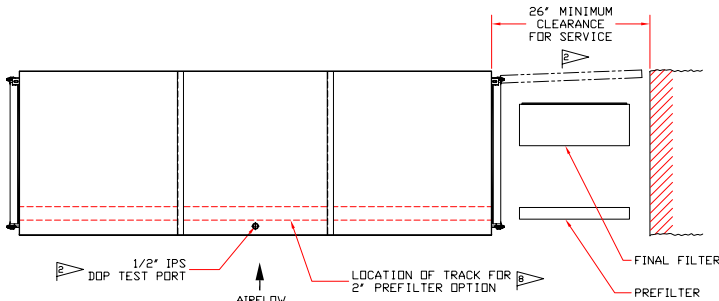
TYPE
XS ABSOLUTE
XH ABSOLUTE
FILTRA 2000
LS ABSOLUTE
LH ABSOLUTE
MICRETAIN 95%

GENERAL NOTES:

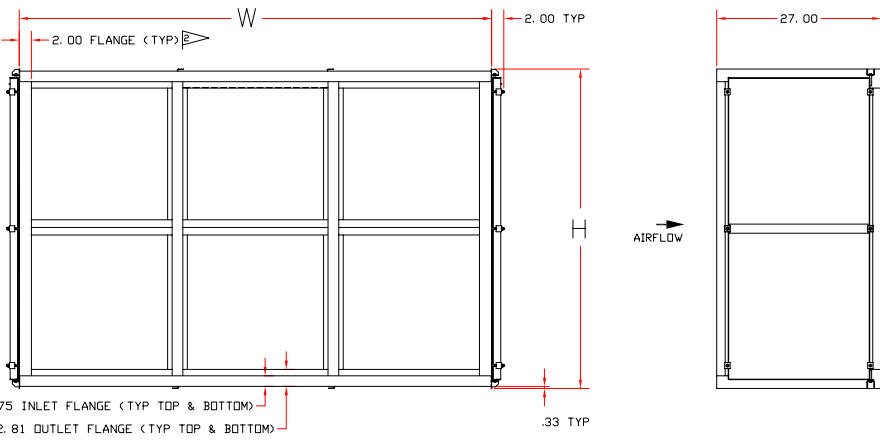
- HOUSINGS ARE COMPLETELY FACTORY ASSEMBLED AND DESIGNED TO ACCEPT STANDARD, FULL AND HALF SIZE HEPA FILTERS (CAMFIL FARR ABSOLUTE OR EQUAL). HOUSING SIZE AVAILABILITY PER TABLE I, SEE TABLE II FOR HOUSING OPTIONS AND TABLE IV FOR FILTER OPTIONS. FOR APPLICATIONS REFER TO SALES BULLETIN 2411-024. FILTERS ARE TO BE IN EITHER OF THE TWO DEPTHS AS FOLLOWS:
 - MODEL 4-6 USES 24" X 24" X 5.88" HEPA FILTERS
 - MODEL 4-12 USES 24" X 24" X 11.50" HEPA FILTERS
- STANDARD MATERIAL OF CONSTRUCTION: 14GA GALVANIZED STEEL HOUSING, PREFILTER TRACKS AND REMOVABLE DOORS. NEOPRENE DOOR GASKET, 1/2" IPS TEST PORT AND APPROPRIATE FILTER CLAMPING HOUSING FLANGE COMES WITHOUT BOLT HOLE PATTERN.
- HOUSING OPTIONS: (SPECIAL PRICING AND PART NUMBERS REQUIRED).
 - A. 14GA 304 OR 316 STAINLESS STEEL HOUSING AND TRACKS.
 - B. PRIMED ONLY (OR PRIMED AND PAINTED) INSIDE, OUTSIDE OR BOTH.
 - C. FIVE FILTERS HIGH MAXIMUM AS ONE PIECE CONSTRUCTION.
 - D. OTHER SPECIAL OPTIONS REQUIRE CAMFIL FARR ENGINEERING CONSULTATION.
 - E. SEE TABLE IV FOR FILTER OPTIONS. FILTERS ARE NOT INCLUDED WITH HOUSING, ORDER SEPARATELY.
 - F. SEE DRAWING 121486 FOR OTHER SPECIAL SIZE UNITS. 4" & 6" PREFILTER TRACKS.
- FILTERS ARE INSTALLED AND CLAMPED IN PLACE ONE AT A TIME IN SEQUENCE THRU EITHER OR BOTH DOORS. EACH FILTER IS INDIVIDUALLY CLAMPED IN PLACE WITH FOUR INDEPENDENT SWING BOLTS. FILTER CLAMPING HOOK IS REQUIRED FOR FILTRA 2000 INSTALLATION.
- AT FILTER INSTALLATION OR CHANGE-OUT, SWING BOLTS MAY BE SWUNG TO ONE SIDE OR REMOVED AS PREFERRED FOR ACCESS CONVENIENCE.
- QUANTITIES LISTED IN TABLE I ARE FOR HIGH CAPACITY HEPA OR 4,400 CFM FOR STANDARD CAPACITY.
 - EXAMPLE A: A 2X6 HOUSING IS RATED AT 8,000 CFM FOR HIGH CAPACITY HEPA OR 4,400 CFM FOR STANDARD CAPACITY.
 - EXAMPLE B: A 1.5X3 HOUSING IS RATED AT 9,000 CFM FOR HIGH CAPACITY OR 4,950 CFM FOR STANDARD CAPACITY.
- ABSOLUTE FILTERS AND PREFILTERS ARE NOT INCLUDED, ORDER SEPARATELY, STATING QUANTITIES, TYPE AND SIZE. ABSOLUTE FILTER TO HAVE GASKET ON THE DOWNSTREAM FACE. FOR PREFILTER OPTION, PREFILTER SPACER IS INCLUDED WITH HOUSING.
- ORDERING INFORMATION: ORDER STANDARD HOUSING BY MODEL, NAME AND SIZE. ADD OPTION AFTER MODEL NUMBER.
 - EXAMPLE: MAGNA/PACK 4-12 WITH PREFILTER 2X4 M/P 4-12 PF 2X4

PERFORMANCE NOTES:

- STANDARD HOUSING OPERATING PRESSURE TO 48" W.G. REINFORCING IS REQUIRED FOR HIGHER OPERATING PRESSURE.
- OPERATING TEMPERATURE: 250°F CONTINUOUS. MEETS NFPA 90A AND TESTED PER ASTM-E84. FOR HIGHER TEMPERATURE, 304SS UNIT IS RECOMMENDED.
- INSULATION ON INSULATED UNIT IS 1" THICK AND IS RATED AT 0.25-0.30 "K" FACTOR.
- RECOMMENDED PRESSURE GAUGE ACCURACY TO BE ±3% FROM 0.0" TO 6.0" W.G.



TOP VIEW



FRONT VIEW

SIDE VIEW

MFG. DWG. (SEE TABLE III)

R	DATE	DESCRIPTION	BY	CHK	APP
07/15/03	REVISED TABLE III MFG DWG 4-12 I PF	14955-AC	SMA	CAM	CBS
11/17/76	FIRST ISSUE	7960-D	PCI	CBM	CR
REV	DATE	DESCRIPTION	EDW	DFT	CK APP



© Camfil Farr <http://www.camfilfarr.com>

DESCRIPTION
MAGNA/PACK 4-6, 4-6 I, 4-12, 4-12 I WITH/WITHOUT PREFILTER
1/2 THRU 4 HIGH

SHEET 062977
1 OF 1
DRAWING NUMBER
REV R