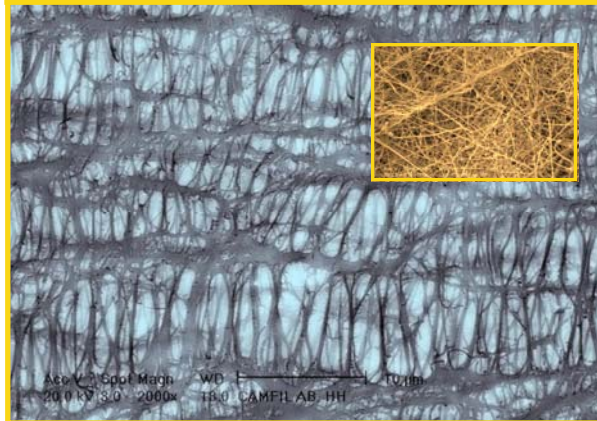


e-ptfe

Low out-gassing, Chemically Compatible, High Efficiency Filter



Filter efficiency without compromise.
Low out-gassing, chemically resistant, hydrophobic and durable.



E-PTFE media has a unique close matrix that offers superior particle capture and high media tensile strength when compared to standard HEPA media (inset picture).

Camfil Farr's e-PTFE filters have been developed specifically for the most demanding high efficiency filtration applications.

High Media Mechanical Strength

The e-PTFE filter incorporates a durable ULPA grade polytetrafluoroethylene media. The media offers a high tensile strength, and is resistant to damage during shipping, handling, installation and application. The media is also chemically-resistant, hydrophobic and will not shed. Media pack depths of 1.77" (45 mm) and 2.67" (68 mm) are available to fit a wide variety of airflow requirements.

Exclusive Camfil Farr Closepleat Technology

Camfil Farr's e-PTFE media is formed into uniform pleats using Camfil Farr's patented Closepleat™ manufacturing technology. Media area is optimized for maximum airflow, and media configuration losses are minimized. The pleating process is performed in Camfil Farr's Class 10,000 (ISO 7) clean room to ensure purity of the filter, reducing the start-up time required to reach room cleanliness level.

Low Out-gassing

Camfil Farr's e-PTFE filters are boron and phosphorus free, and do not include any other dopants in the materials of construction. These properties are especially important in applications where out-gassing has the potential for reducing process yields, such as in semiconductor manufacturing facilities.

Sturdy Aluminum Frame

The Camfil Farr e-PTFE filter incorporates a heavy-duty, extruded anodized aluminum frame to form a rugged and durable filter. Camfil Farr includes a polyurethane gasket on standard models to ensure a leak free seal. The media pack is sealed within the frame using CamPure ultra-low out-gassing polyurethane sealant.

Additional configuration options, including knife-edge and gel seal, are available.



| | |
|---------------------------------|---------------|
| Camfil Farr | Product sheet |
| E-PTFE | 3219 - 0707 |
| Camfil Farr—clean air solutions | |

PERFORMANCE DATA

E-PTFE

| Model | Efficiency | Nominal Size (inches) | Pressure Drop (inches w.g.) @ 100 fpm | Weight (lbs.) | | |
|------------------------------------------------------------------------------------|------------------------|------------------------|---------------------------------------|---------------|------|----|
| Frame Type: Gasket Seal (3.00" overall depth, 76 mm) Pleat Depth 1.77" (45 mm) | | | | | | |
| S2-12.00-24.00-1-03-00-00-00-0 | 99.99995% @ MPPS | 12 x 24 | 0.48 | 12 | | |
| S2-24.00-24.00-1-03-00-00-00-0 | | 24 x 24 | | 16 | | |
| S2-24.00-36.00-1-03-00-00-00-0 | | 24 x 36 | | 23 | | |
| S2-24.00-48.00-1-03-00-00-00-0 | | 24 x 48 | | 29 | | |
| S2-24.00-60.00-1-03-00-00-10-0 | | 24 x 60 | | 38 | | |
| S2-24.00-72.00-1-03-00-00-10-0 | | 24 x 72 | | 44 | | |
| S2-30.00-36.00-1-03-00-00-00-0 | | 30 x 36 | | 27 | | |
| S2-30.00-48.00-1-03-00-00-10-0 | | 30 x 48 | | 38 | | |
| S2-30.00-60.00-1-03-00-00-10-0 | | 30 x 60 | | 45 | | |
| S2-30.00-72.00-1-03-00-00-10-0 | | 30 x 72 | | 52 | | |
| S2-36.00-36.00-1-03-00-00-10-0 | | 36 x 36 | | 35 | | |
| S2-36.00-48.00-1-03-00-00-00-0 | | 36 x 48 | | 44 | | |
| S2-36.00-60.00-1-03-00-00-00-0 | | 36 x 60 | | 52 | | |
| Frame Type: Gasket Seal (3.54" overall depth, 90mm) Pleat Depth 2.68" (68 mm) | | | | | | |
| S2-12.00-24.00-2-14-00-00-00-0 | | 99.99995% @ MPPS | | 12 x 24 | 0.37 | 12 |
| S2-24.00-24.00-2-14-00-00-00-0 | | | | 24 x 24 | | 16 |
| S2-24.00-36.00-2-14-00-00-00-0 | 24 x 36 | | 23 | | | |
| S2-24.00-48.00-2-14-00-00-00-0 | 24 x 48 | | 29 | | | |
| S2-24.00-60.00-2-14-00-00-30-0 | 24 x 60 | | 38 | | | |
| S2-24.00-72.00-2-14-00-00-30-0 | 24 x 72 | | 44 | | | |
| S2-30.00-36.00-2-14-00-00-00-0 | 30 x 36 | | 27 | | | |
| S2-30.00-48.00-2-14-00-00-30-0 | 30 x 48 | | 38 | | | |
| S2-30.00-60.00-2-14-00-00-30-0 | 30 x 60 | | 45 | | | |
| S2-30.00-72.00-2-14-00-00-30-0 | 30 x 72 | | 52 | | | |
| S2-36.00-36.00-2-14-00-00-30-0 | 36 x 36 | | 35 | | | |
| S2-36.00-48.00-2-14-00-00-30-0 | 36 x 48 | | 44 | | | |
| S2-36.00-60.00-2-14-00-00-30-0 | 36 x 60 | | 52 | | | |

DATA NOTES

Operating temperature to 150° F (66° C), relative humidity to 100%.

Above filters are gasket seal type. For gel seal type replace 03 in first set of model numbers with 41, and replace 14 in second set of model numbers with 40 (12th and 13th digits).

SPECIFICATIONS

Air Filters—1.0 General

1.1 - Air filters shall be ULPA grade, standard capacity air filters, with water-resistant polytetrafluoroethylene media formed into a durable filter pack, using the Closepleat manufacturing process and sealed into an anodized extruded aluminum frame.

1.2 - Sizes shall be as noted on drawings or other supporting materials.

2.0 Construction

2.1 - Filter media shall be one continuous pleating of water-resistant polytetrafluoroethylene media formed into a durable filter pack.

2.2 - Pleats shall be uniformly spaced, using the Closepleat manufacturing process, to allow uniform airflow through the media and reduce configuration losses.

2.3 - The media pack shall be bonded to the enclosing frame through the use of an ultra low out-gassing polyurethane sealant.

2.4 - The enclosing frame, of anodized aluminum construction, shall be bonded to the media pack and form a rugged and durable enclosure.

Overall dimensional tolerance shall be correct within -1/8", +0", and square within 1/8".

2.5 - A polyurethane gasket (or other specified gasketing material), shall be installed on the appropriate location, as noted in supporting materials, to form a positive seal upon installation.

3.0 Performance

3.1 - The filter shall have a minimum tested efficiency of 99.99995% when evaluated at Most Penetrating Particle Sizes (MPPS) at 100 fpm.

3.2 - Initial resistance to airflow shall not exceed 0.48" on a filter pack depth of 1.77" (45 mm) or 0.37" on a filter pack depth of 2.68" (68 mm) at 100 fpm.

3.3 - Filters shall be listed by Underwriters Laboratories as UL Class 1.

3.4 - Manufacturer shall provide evidence of facility certification to ISO 9001:2000.

Supporting Data - The filter shall be labeled as to tested efficiency, rated/tested airflow, pressure drop and shall be serialized for identification and quality assurance. Product out-gassing data shall be available on request.

Camfil Farr has a policy of uninterrupted research, development and product improvement. We reserve the right to change designs and specifications without notice.

Camfil Farr, Inc.

United States Tel: (973) 616-7300 Fax: (973) 616-7771

Canada Tel: (450) 629-3030 Fax: (450) 662-6035

E-mail: camfilfarr@camfilfarr.com

© Camfil Farr

<http://www.camfilfarr.info>
<http://www.camfilfarr.com>

