

| AVAILABLE SIZES<br>(NOMINAL) | ACTUAL DIMENSIONS |       |   | ORDERING REFERENCE         |  |  | GASKET OPTION            |
|------------------------------|-------------------|-------|---|----------------------------|--|--|--------------------------|
|                              | H                 | W     | A | MATERIAL                   |  |  |                          |
|                              |                   |       |   | MS S                       | S4                                       | S6                                       |                          |
|                              |                   |       |   | WILD STEEL<br>16 GA (.060) | TYPE 304 STAINLESS STEEL<br>16 GA (.060) | TYPE 316 STAINLESS STEEL<br>16 GA (.060) |                          |
| 24 X 24 X 4                  | 23.38             | 23.38 | 7 | 125070001                  | 125237001                                | 125238001                                | WITH GASKET<br>(1)       |
| 24 X 12 X 4                  | 23.38             | 11.38 | 4 | 125070002                  | 125237002                                | 125238002                                |                          |
| 12 X 24 X 4                  | 11.38             | 23.38 | 7 | 125070003                  | 125237003                                | 125238003                                |                          |
| 24 X 24 X 4                  | 23.38             | 23.38 | 7 | 114216001                  | 114216002                                | 114216003                                | WITHOUT GASKET<br>(NONE) |
| 24 X 12 X 4                  | 23.38             | 11.38 | 4 | 125239001                  | 125239002                                | 125239003                                |                          |
| 12 X 24 X 4                  | 11.38             | 23.38 | 7 | 121946001                  | 121946002                                | 121946003                                |                          |

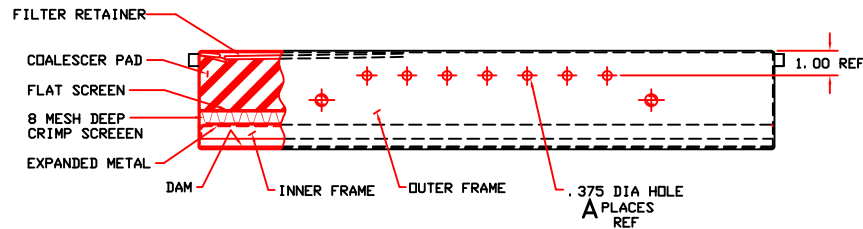
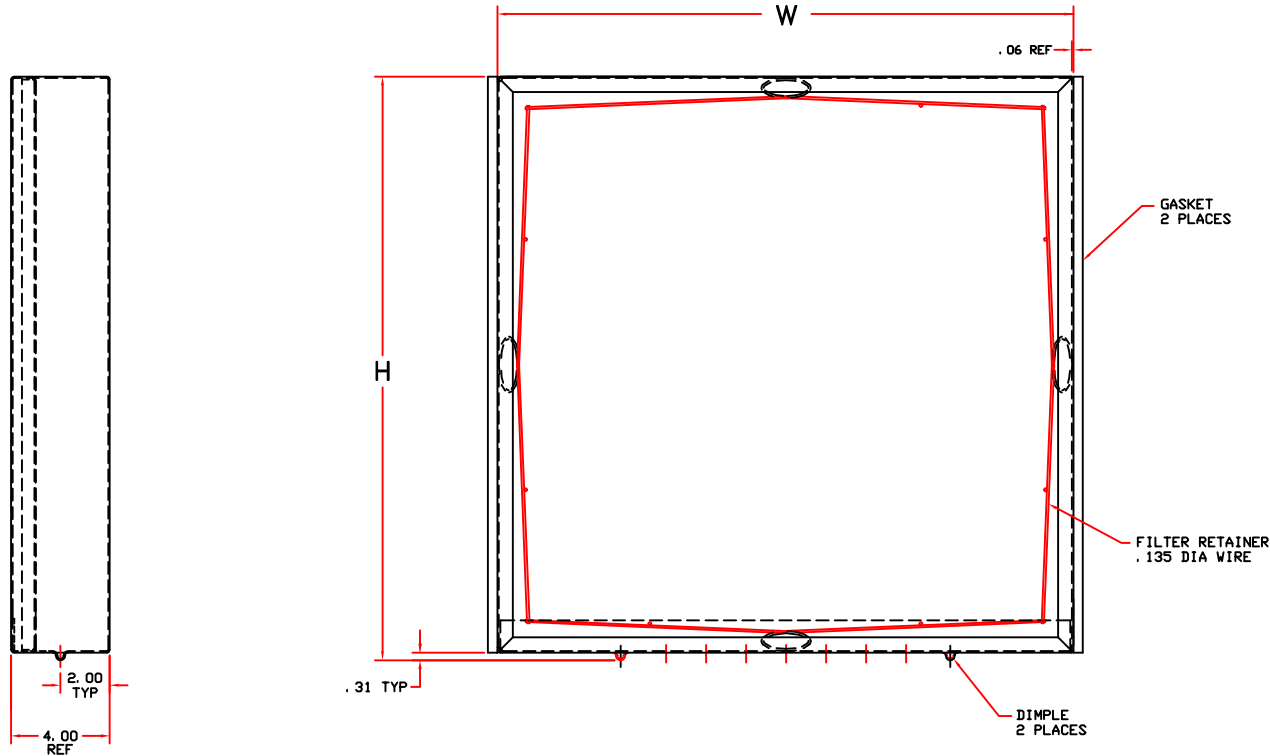
**GENERAL NOTES:**

- MATERIALS OF CONSTRUCTION  
A. FRAME; SEE TABULATION BLOCK.  
B. GASKET; NEDPRENE SPONGE
- ORDERING INSTRUCTIONS  
SPECIFY BY NAME, MATERIAL, GASKET OPTION, SIZE (HXW), AND ORDERING REFERENCE.

**EXAMPLE**

- MSGPGS-1 24X24 (WITH GASKET)  
P/N 125070001
- MSGPGS 24X24 (WITHOUT GASKET)  
P/N 114216001

- HOT DIPPED GALVANIZED STEEL (HRS).
- FOR MOISTURE SEPARATORS WITHOUT GLASS PAD FOR G/P MOISTURE PACK SEE DRAWING 402305.
- FILTER MUST BE USED VERTICALLY (AIR FLOW HORIZONTALLY) WITH TOP MARKER AT THE TOP.



|     |          |                   |          |     |     |     |
|-----|----------|-------------------|----------|-----|-----|-----|
| J   | 07/19/06 | REVISED PER SALES | 14955-AL | SMA | CAM |     |
| A   | 05/08/96 | FIRST ISSUE       | 12710    | SR  |     |     |
| REV | DATE     | DESCRIPTION       | EWO      | DFT | CK  | APP |



DESCRIPTION  
MOISTURE SEPARATOR/GLASS COALESCER PAD (TAB)  
WITH & WITHOUT GASKET

|        |                |     |
|--------|----------------|-----|
| SHEET  | DRAWING NUMBER | REV |
| 1 OF 1 | 114063         | J   |

MFG. DWG. (SEE ORDERING REF.)