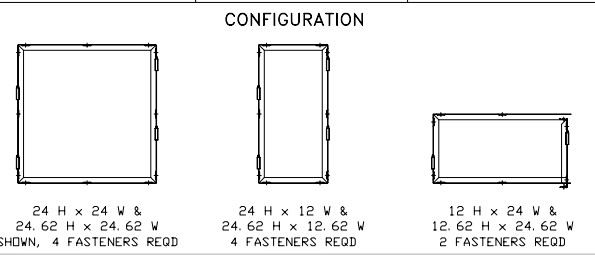
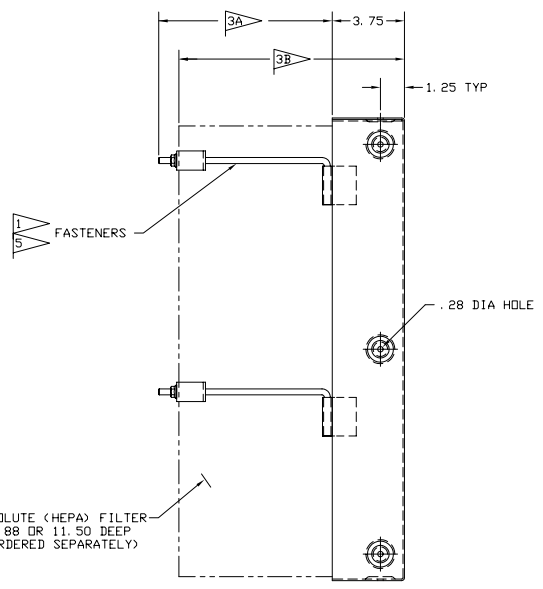
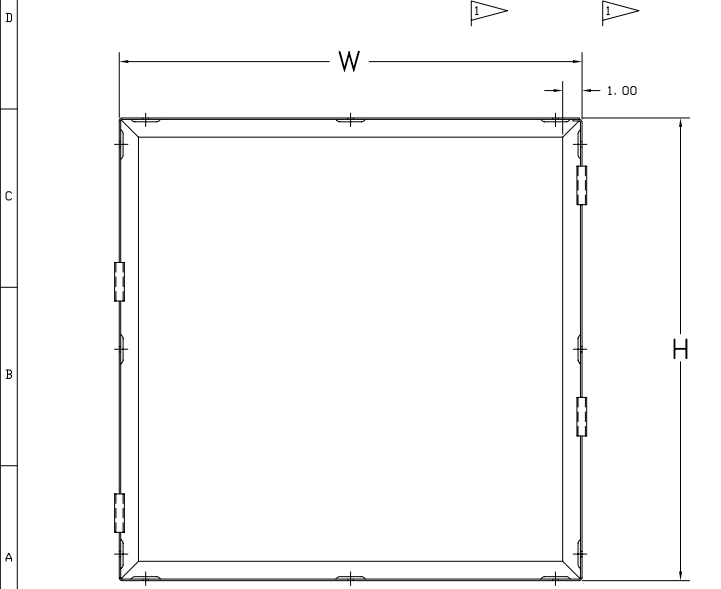


ABSOLUTE FILTER SIZE		H	W	MATERIAL	ORDERING REFERENCE					
					MAGNA-FRAME PART NO.	FASTENER 5.88 DEEP FILTER	NO. REQD	FASTENER 11.50 DEEP FILTER	NO. REQD	
23-3/8	23-3/8	24.00	24.00	GALVANIZED STEEL 14 GA (.075)	119636	001	4	119669	002	4
23-3/8	11-3/8	24.00	12.00				4			4
11-3/8	23-3/8	12.00	24.00				2			2
24	24	24.62	24.62				4			4
24	12	24.62	12.62				4			4
12	24	12.62	24.62				2			2
23-3/8	23-3/8	24.00	24.00				4			4
23-3/8	11-3/8	24.00	12.00	TYPE 304 STAINLESS STEEL 14 GA (.075)	119636	003	119669	004	4	
11-3/8	23-3/8	12.00	24.00						2	2
24	24	24.62	24.62						4	4
24	12	24.62	12.62						4	4
12	24	12.62	24.62						2	2
23-3/8	23-3/8	24.00	24.00						4	4
23-3/8	11-3/8	24.00	12.00						MILD STEEL 14 GA (.075)	119636
11-3/8	23-3/8	12.00	24.00	2	2					
24	24	24.62	24.62	4	4					
24	12	24.62	12.62	4	4					
12	24	12.62	24.62	2	2					
23-3/8	23-3/8	24.00	24.00	4	4					
23-3/8	11-3/8	24.00	12.00	4	4					
11-3/8	23-3/8	12.00	24.00	2	2					
24	24	24.62	24.62	4	4					
24	12	24.62	12.62	4	4					
12	24	12.62	24.62	2	2					



NOTES:

1. FASTENERS (ORDERED SEPARATELY):
A. SEE TABULATION FOR ORDERING REFERENCE AND NUMBER REQUIRED PER FRAME. IF PRE-FILTER KIT IS REQUIRED OMIT FASTENERS.
- B. REFER TO 124251 AND 401035 FOR PRE-FILTER KIT ORDERING REFERENCE.
2. FOR MULTI-BANK ARRANGEMENTS, SEE INSTALLATION INSTRUCTIONS 120652
3. LENGTHS:
A. FASTENER:
3.3 FOR 5.88 DEEP FILTER AND 8.9 FOR 11.50 DEEP FILTER
B. FRAME WITH FILTER:
6.2 FOR 5.88 DEEP FILTER AND 11.8 FOR 11.50 DEEP FILTER
4. FOR MAGNA FRAME III (GEL SEAL) UNITS SEE DRAWING 125149.
5. TIGHTEN FASTENERS UNIFORMLY TO 30 INCH-POUNDS OF TORQUE.



D	1/21/03	REVISED PER SALES	14955-Y	AC	CM	CM
A	10/26/93	FIRST ISSUE	10413-N	JWC	JWC	CM
REV.	DATE	DESCRIPTION	END	DFT	CK	APP

camfil
FARR

©Camfil Farr <http://www.camfilFarr.com>

DESCRIPTION
MAGNA-FRAME II
GASKET-SEAL ABSOLUTE FILTER

SHEET	DRAWING NUMBER:	REV.
1 OF 1	119658	D