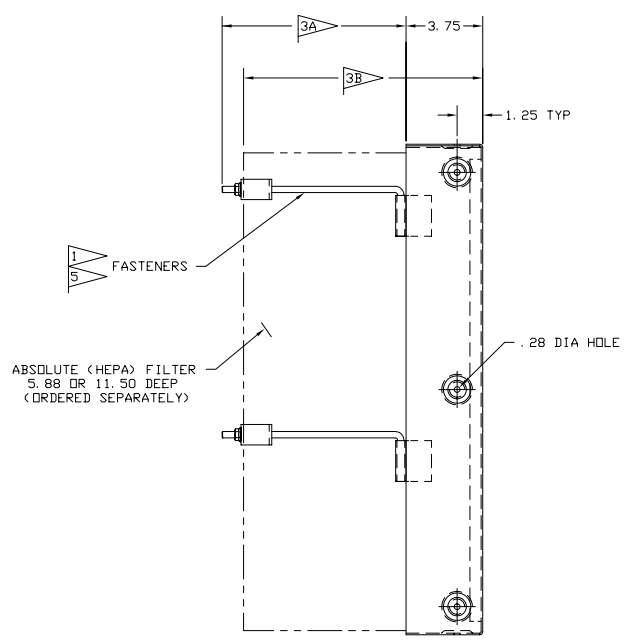
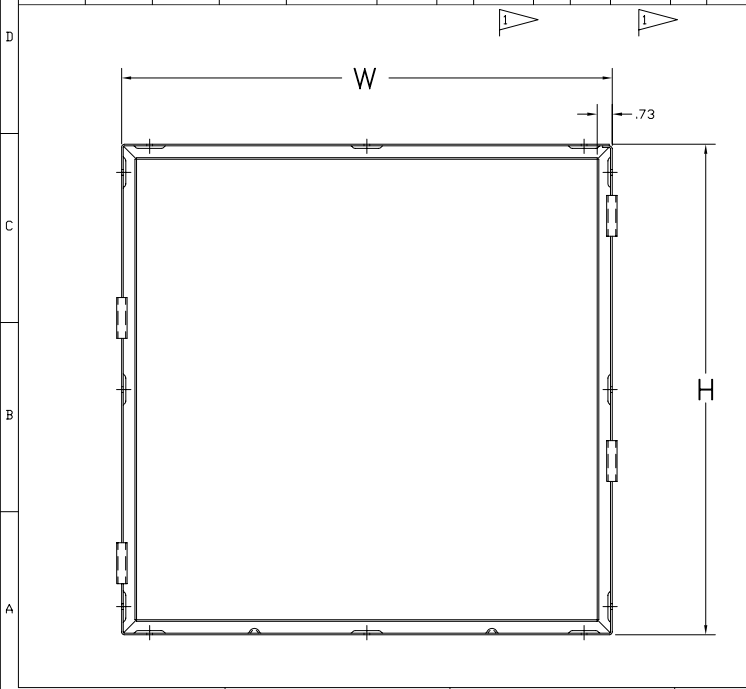
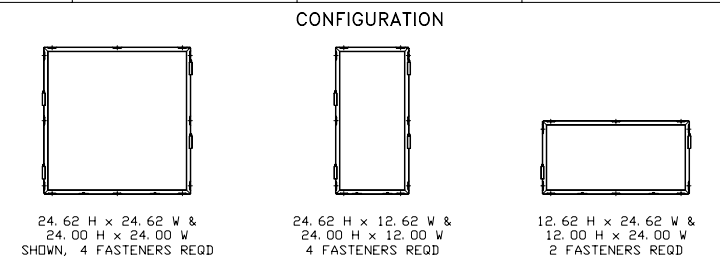


ABSOLUTE FILTER SIZE		H	W	MATERIAL	ORDERING REFERENCE					
					MAGNA-FRAME PART NO.	FASTENER 5.88 DEEP FILTER	NO. REQD	FASTENER 11.50 DEEP FILTER	NO. REQD	
24	24	24.62	24.62	GALVANIZED STEEL 14 GA (.075)	125150	001	4	119669	002	4
24	12	24.62	12.62				4			4
12	24	12.62	24.62				2			2
23-3/8	23-3/8	24.00	24.00				4			4
23-3/8	11-3/8	24.00	12.00				4			4
11-3/8	23-3/8	12.00	24.00				2			2
24	24	24.62	24.62	TYPE 304 STAINLESS STEEL 14 GA (.075)	125150	003	4	119669	004	4
24	12	24.62	12.62				4			4
12	24	12.62	24.62				2			2
23-3/8	23-3/8	24.00	24.00				4			4
23-3/8	11-3/8	24.00	12.00				4			4
11-3/8	23-3/8	12.00	24.00				2			2
24	24	24.62	24.62	MILD STEEL 14 GA (.075)	125150	001	4	119669	002	4
24	12	24.62	12.62				4			4
12	24	12.62	24.62				2			2
23-3/8	23-3/8	24.00	24.00				4			4
23-3/8	11-3/8	24.00	12.00				4			4
11-3/8	23-3/8	12.00	24.00				2			2



- NOTES:**
- FASTENERS (ORDERED SEPARATELY):
A. SEE TABULATION FOR ORDERING REFERENCE AND NUMBER REQUIRED PER FRAME. IF PRE-FILTER KIT IS REQUIRED OMIT FASTENERS.
B. REFER TO 124251 AND 401035 FOR PRE-FILTER KIT ORDERING REFERENCE.
 - FOR MULTI-BANK ARRANGEMENTS, SEE INSTALLATION INSTRUCTIONS 125152
 - LENGTHS:
A. FASTENER:
3.3 FOR 5.88 DEEP FILTERS AND 8.9 FOR 11.50 DEEP FILTERS
B. FRAME WITH FILTER:
6.0 FOR 5.88 DEEP FILTER AND 11.6 FOR 11.50 DEEP FILTER
 - FOR MAGNA FRAME II (GASKET SEAL) UNITS SEE DRAWING 119658.
 - TIGHTEN FASTENERS UNIFORMLY TO 30 INCH-POUNDS OF TORQUE.

E	1/21/03	REVISED PER SALES	14955-Y	AC	DM	CAPP
A	9/11/96	FIRST ISSUE	14863	JWC	DM	CAPP
REV.	DATE	DESCRIPTION	END	DFT	CK	APP



DESCRIPTION
MAGNA-FRAME III
GEL-SEAL ABSOLUTE FILTER

SHEET	DRAWING NUMBER:	REV.
1 OF 1	125149	E