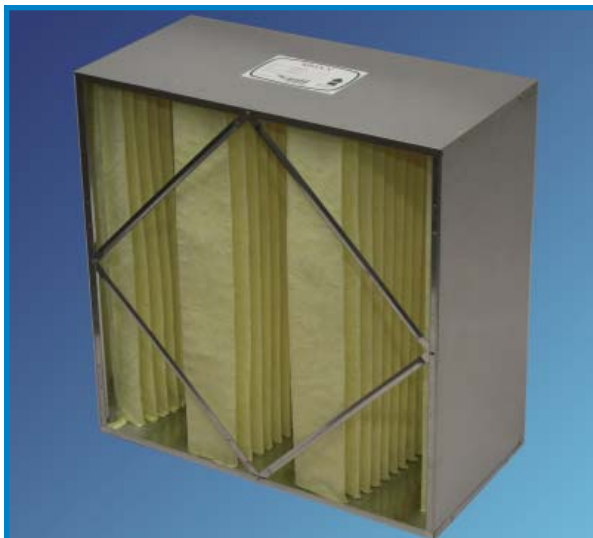


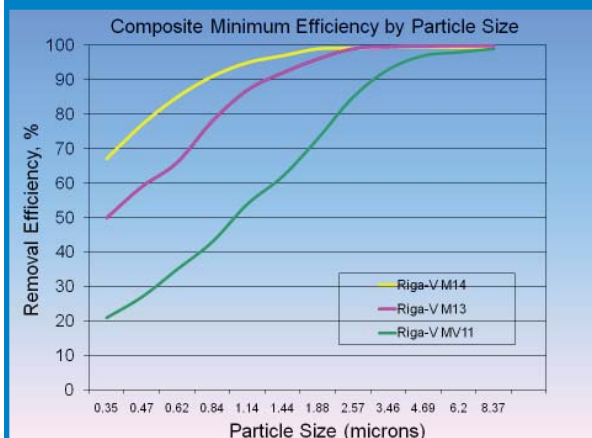


# Riga-V

High Efficiency, Rigid Filtration in a Unique V-Pleated Media Configuration



High efficiency supported media filtration in a low first cost v-pleat configuration.



Values are Minimum Efficiency Reporting Values (MERV) when evaluated per ASHRAE Standard 52.2.

The Camfil Farr Riga-V provides high efficiency ASHRAE air filtration performance in a compact, supported media design. The materials of construction preclude contaminant amplification, as all components are inert to supporting the growth of captured bacteria or other viable contaminants. The Riga-V:

- Is available in three efficiencies: MERV 11, MERV 13 and MERV 14, when evaluated under ASHRAE Standard 52.2.
- Includes high-lofted, depth-loading, synthetic media assembled in a unique V-pleat configuration for maximum airflow exposure, longer service life and uniform low resistance to airflow. Filtration efficiency is maintained throughout the life of the filter.
- Includes a wire media backing, spot-welded on one-inch centers, bonded to the media to support and maintain tapered radial pleats, and prevent media oscillation during varying system airflow.
- Includes bridge style plastic contour stabilizers on the downstream side that are tapered to the pleat configuration, to ensure pleat stability and media pack integrity.
- Includes a unique media-to-frame adhesive that prevents air bypass and ensures that all of the air seen by the filter will be treated by the filter. The media will not tear away from the frame even under the harshest airflow conditions.
- Includes an enclosing frame of corrosion-resistant galvanized steel that helps to ensure containment of captured contaminants during filter replacement.
- Includes diagonal frame support members that ensure filter rigidity and squareness. The filter will fit properly into any filter holding frame and seal uniformly across the filter frame sealing gasket.
- Has an ECI<sup>1</sup> value of three stars.

The Riga-V may be used in commercial buildings, institutional and medical facilities, industrial facilities, utilities and any other location where clean air is required to protect products and people.

<sup>1</sup> The Energy Cost Index (ECI) is a system that rates a filter's energy usage and its ability to maintain published efficiency over its lifetime. ECI is useful when comparing filters of similar construction and published efficiency. ECI ratings range from a high of 5 stars (low life cycle cost and high overall value) to a low of 1 star (high life cycle cost and low overall value). Details on ECI ratings for Camfil Farr and competitor's products are available from your Camfil Farr sales outlet and on the web at [www.camfilfarr.com](http://www.camfilfarr.com).



Camfil Farr	Product sheet
Riga-V	1414 - 0909
Camfil Farr - clean air solutions	

**PERFORMANCE DATA**

**RIGA-V**

Model & Efficiency <sup>1</sup>	Part Number	Nominal Depth (inches)	Nominal Size (H x W) (inches)	Actual Size (inches)			Initial Resistance (inches, w.g.)	Airflow Capacity (cfm)	Media Area (ft <sup>2</sup> )
				Depth	Height	Width			
Riga-V MV14 MERV 14	404340-014	12	24 x 12	11.50	23.38	11.38	0.47	1000	20.5
	404340-034		20 x 20		19.38	19.38		1400	28.6
	404340-024		24 x 20		23.38	19.38		1670	34.2
	404340-004		24 x 24		23.38	23.38		2000	41.0
Riga-V MV13 MERV 13	404340-013	12	24 x 12	11.50	23.38	11.38	0.38	1000	20.5
	404340-033		20 x 20		19.38	19.38		1400	28.6
	404340-023		24 x 20		23.38	19.38		1670	34.2
	404340-003		24 x 24		23.38	23.38		2000	41.0
Riga-V MV11 MERV 11	404340-012	12	24 x 12	11.50	23.38	11.38	0.29	1000	20.5
	404340-032		20 x 20		19.38	19.38		1400	28.6
	404340-022		24 x 20		23.38	19.38		1670	34.2
	404340-002		24 x 24		23.38	23.38		2000	41.0

**DATA NOTES:**

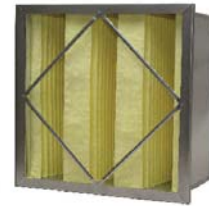
<sup>1</sup> Respective listed efficiencies are MERV per ASHRAE Standard 52.2.

Maximum recommended final pressure drop is 1.50" w.g. System design may indicate a lower change-out point.

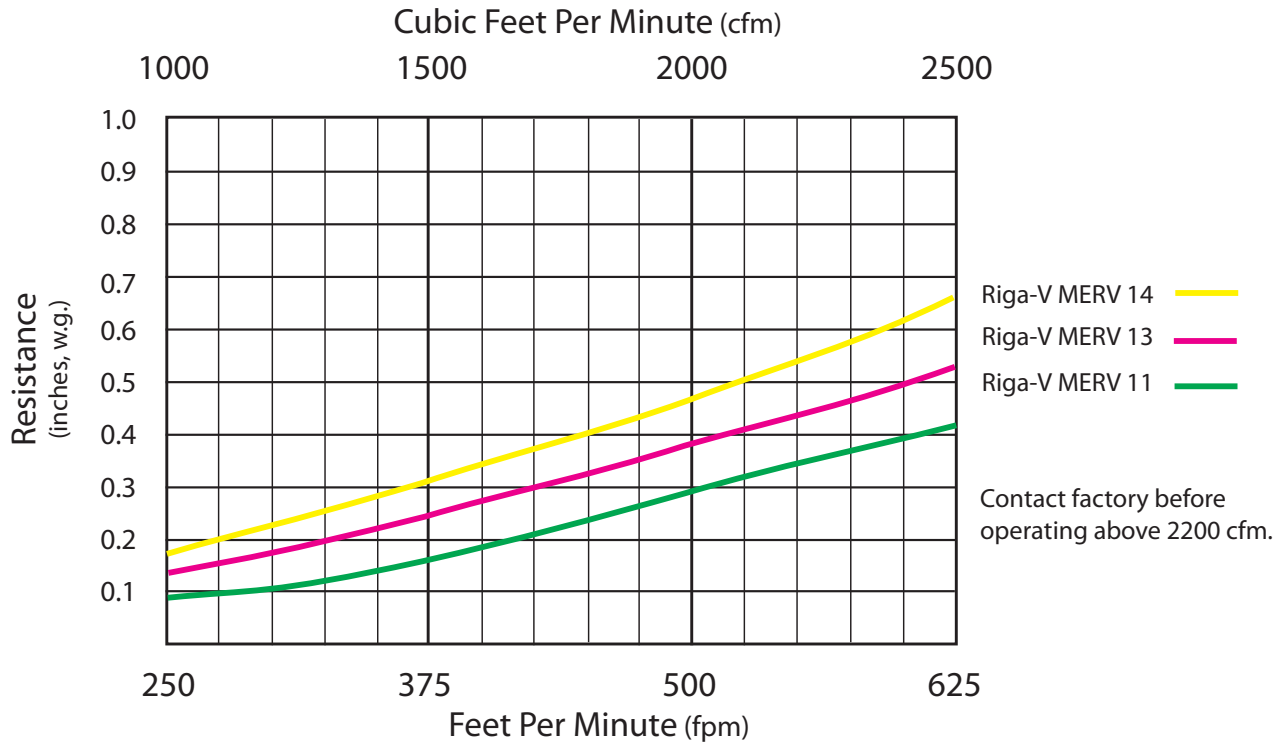
Maximum continuous operating temperature is 160° F (70° C), 180° F (82° C) intermittent.

Also available in a header version, shown to the right. See Product Sheet 1417.

Performance tolerance in conformance with ARI Standard 850.



## Initial Resistance Versus Airflow



Detailed specifications for Camfil Farr products are available at [www.camfilfarr.com](http://www.camfilfarr.com) web site.

Camfil Farr is committed to continuous research, development and product improvement. We reserve the right to change designs and specifications without notice.

Camfil Farr  
 United States Tel: (973) 616-7300 Fax: (973) 616-7771  
 Canada Tel: (450) 629-3030 Fax: (450) 662-6035  
 E-mail: [camfilfarr@camfilfarr.com](mailto:camfilfarr@camfilfarr.com)



Star rating based upon MERV 13 size 24" by 24" by 12" deep filter.

